

## Project

# HOUSE L

## Architects

AAPW

## Address

Rue des Déportés, 128, 59.390 Toufflers

## Programme

Adjustment of a kitchen and a handing-over.  
Enlarging of a bathroom.  
Creation of a terrace.

## About

The essence of the extension is placed in an interstice of 1.80 m left free between the house of the owner and the close house.  
Each level of this house all in height finds thus its space complementary.  
Side garden, a terrace supplements spaces of life of the beautiful-stage and gives access to the garden.  
The extension is built in framework wood and is covered with a boarding in fiber-cement plates what confers on this secondary volume its own identity.

## Typology

Private houses

## Status

Built

## Conception

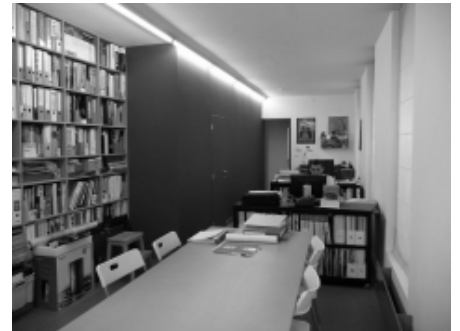
2009

## Delivery

2010

## Area

15 m<sup>2</sup>



6, rue Sart Colin  
7622 Laplaigne

Tél : +32 486 254801

archipw@gmail.com

## OTHER PROJECTS :

Showroom Morlighem sa  
- 2008 2010  
- Tournai

Concession AUDI  
- 2007 2009  
- Ghislenghien

-

-

House W  
- 2001 2004  
- Bléharies



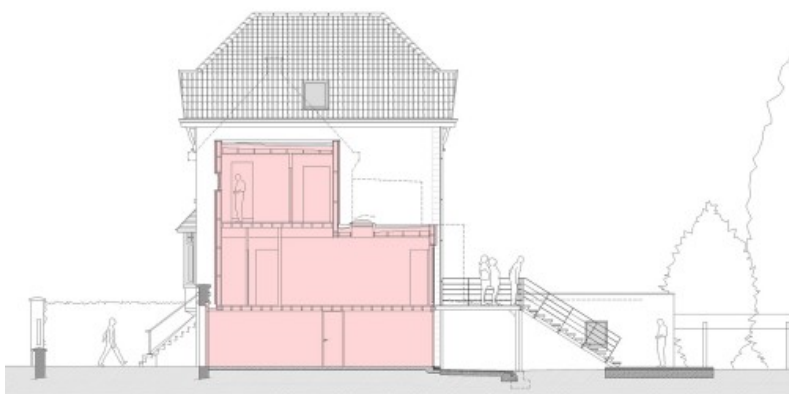
Â© AAPW



© AAPW



© AAPW



© AAPW



Â© AAPW