

Project

EUROPEAN FOOD SAFETY AUTHORITY HEADQUARTERS

Architects

ART & BUILD

Address

Via Carlo Magno 1A, I-43126 Parma

Programme

Public Building - conference centre & offices

About

The site given by Parma Council to the EFSA is located between the inner ring roads (the former ramparts) and the railway line. The project is based on creating visual access to the city in order to open up the site, linking it to the Parco Ducale in the south and the districts which are under development to the north. To the east and west, it is connected to the residential area. The site and the institution want to be open to the city and its inhabitants.

The EFSA headquarters stand out due to their easily recognisable triangular shape. Apart from this easily identifiable image, the architecture of the building promotes interaction while remaining rational. The offices are treated as spaces for work and dialogue. Urban life penetrates the building.

Typology

Civic and community

Status

Built

Conception

2006

Delivery

2011

Client

EFSA

Area

16.000

Co-author

Studio Valle Progettazioni

Stability

Pool Engineering

Special
techniques

Tifs Ingegneria

Landscape

Art Ambiente Risorse e Territoria



Chaussée de Waterloo, 255 - boîte 8
1060 Bruxelles

Tél : +32 2 538 72 71
Fax : +32 2 538 65 57

info@artbuild.com
www.artbuild.com

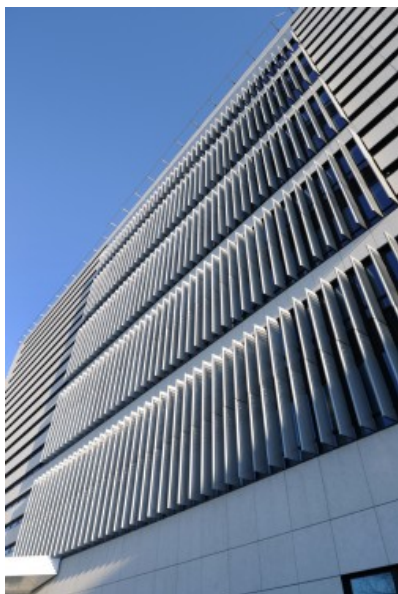
OTHER PROJECTS :

Groupe Chèque Déjeuner Headquarters
- 2006 2010
- Gennevilliers

Solvay Brussels School
- 2002 2010
- Bruxelles

URM Purpan - CHU de Toulouse
- 2009 2015
- Toulouse

Pierres Vives
- 2005 2012
- Montpellier



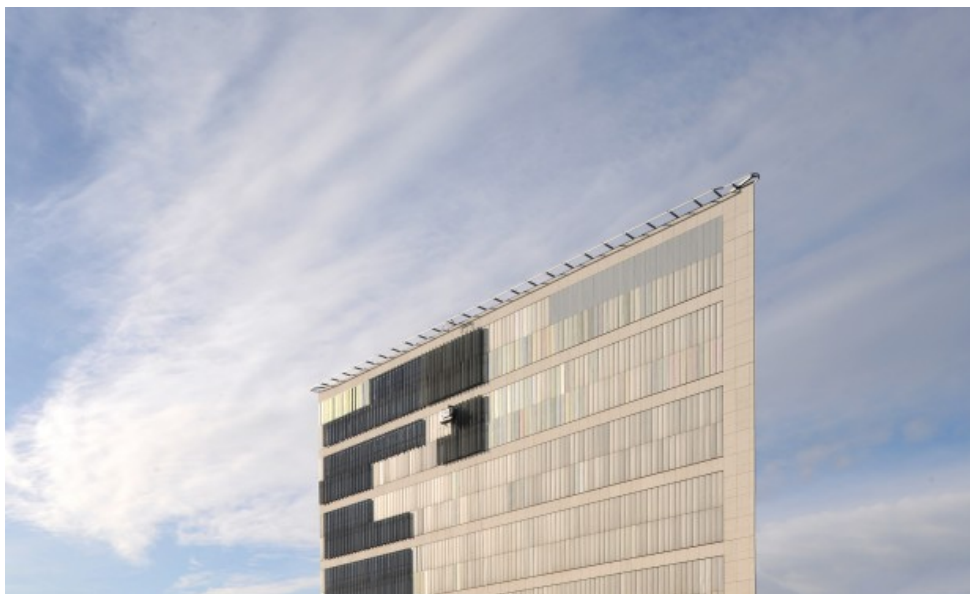
Â© Serge Brison



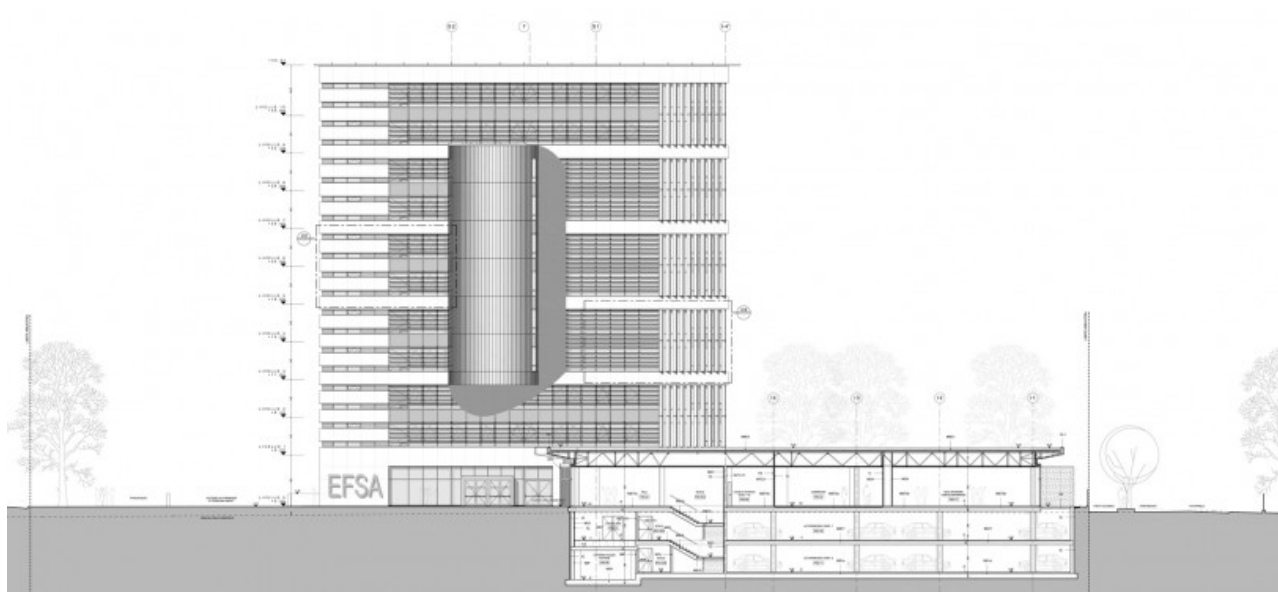
Â© Serge Brison



Â© Serge Brison



© Serge Brison



South Elevation
© Art & Build