

Project

RECONVERSION OF FORMER CONVENT URSULINES

Architects

ATELIER GIGOGNE SPRL

Address

Square Roosevelt 8-10, 7000 Mons

Programme

Partially destroyed by bombing in the last war, the bodies of preserved buildings of the former convent of Ursuline Mons changes have occurred over the business. The first phase of the restoration of this unique monumental complex, whose construction is spread in stages from 1659 to 1729, seeks to recover the basic elements of this historical heritage while redirecting it into offices, apartments and studios supervised.

About

While accepting these listed buildings to their new functions, contemporary architectural interventions make it readable again the initial interior dispositions. For this purpose, the design of housing and offices is subject to the structure of the original plans, partially reconstructed, while the incorporation of studios in the attic frames is inspired by the architecture of monastic cells.

Typology

Civic and community

Status

Built

Conception

2004

Delivery

2013

Client

Fonds du Logement des Familles Nombreuses de Wallonie

Total budget

1.900.000 € htva

Per square meters

1.319 €/m²

Area

1.440 m²

Co-author

L'Escaut-architecture : Olivier Bastin

Architects

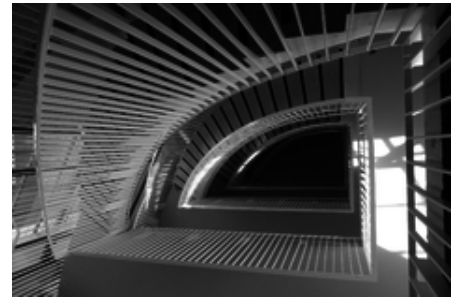
Atelier GIGOGNE : Pierre Van Assche & Catherine Titeux, avec la collaboration de Jean-Philippe De Visscher, Mathieu Jourquin et Laetisia Franck.

Stability

JZH & Partners : Pierre Stoffel

Special techniques

Seca Benelux



rue Schildknecht 33/G
1020 Bruxelles

Tél : 32 2 428 82 02 - 32 476 98 53
96

pierre.vanassche@gigogne.net
www.gigogne.be

OTHER PROJECTS :

Marc Sleen Foundation
- 2009 2010
- Bruxelles

Urban Housing low energy
- 2010 2013
- Bruxelles

Home Women
- 2006 2010
- Bruxelles

Housing for artists "The Black Horse"
- 2003 2010
- Bruxelles



the monumental complex of restored convent
 Â© Pierre Van Assche



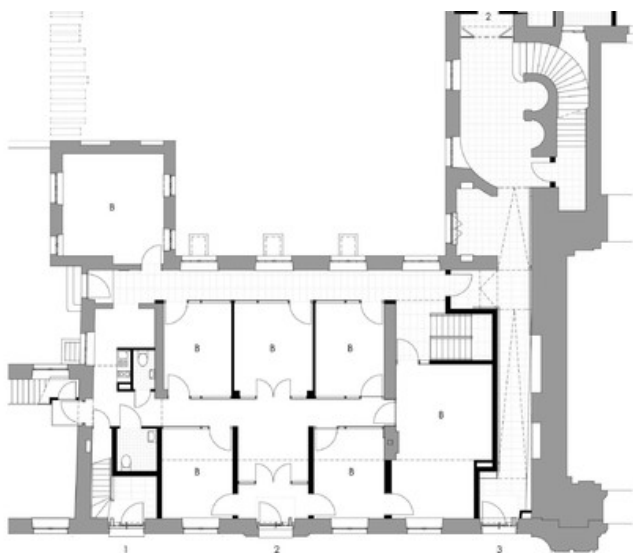
cutting with the chapel in the background
 Â© Atelier Gigogne



access to studios in the attic is inspired by the monastic cells
 Â© Pierre Van Assche



lighting attic via the coyau
 Â© Pierre Van Assche



offices in cells reconstituted parlors
 Â© Atelier Gigogne