

Project

STABLES

Architects

AURÉLIE HACHEZ ARCHITECTE

Address

Bruxelles

Programme

Rénovation of old stables attached to a family house

About

The main corps of this house with an Art Deco facade strangely includes a red brick stable at its rear, bearing witness of Woluwe-Saint-Lambert's rural past in the 1930's. This annex prolongs the building and blocks the view on the backyard. To better suit our current lifestyle the living rooms, which were initially placed on the street side in the body of the noble building, were moved back into the old stable. Its opaque side wall was thus completely removed and replaced on its entire surface by a curtain wall to open the view and let as much light from the north as possible into the building. The original bricks of the side wall were reused to uniformly rebuild the eastern facade. The hay storage space on the upper floor was converted into a playground. Bays were kept or created at ground level, reflecting the history of the building and allowing children to imagine themselves in the trees.

37A, square du Solbosch
1050 Bruxelles

Tél : 0032 472 40 67 33

aureliehachez@gmail.com

OTHER PROJECTS :

Oriel
- 2013 2013
- Bruxelles

Herringbone
- 2012 2012
- Bruxelles

Workshop
- 2013 2013
- Chaumont-Gistoux

L'Ermitage
- 2015 2018
- Bruxelles

Typology

Private houses

Status

Built

Conception

2013

Delivery

2014

Total budget

80 000

Area

70



View of the children's room on the upper floor
Â© Delphine Mathy



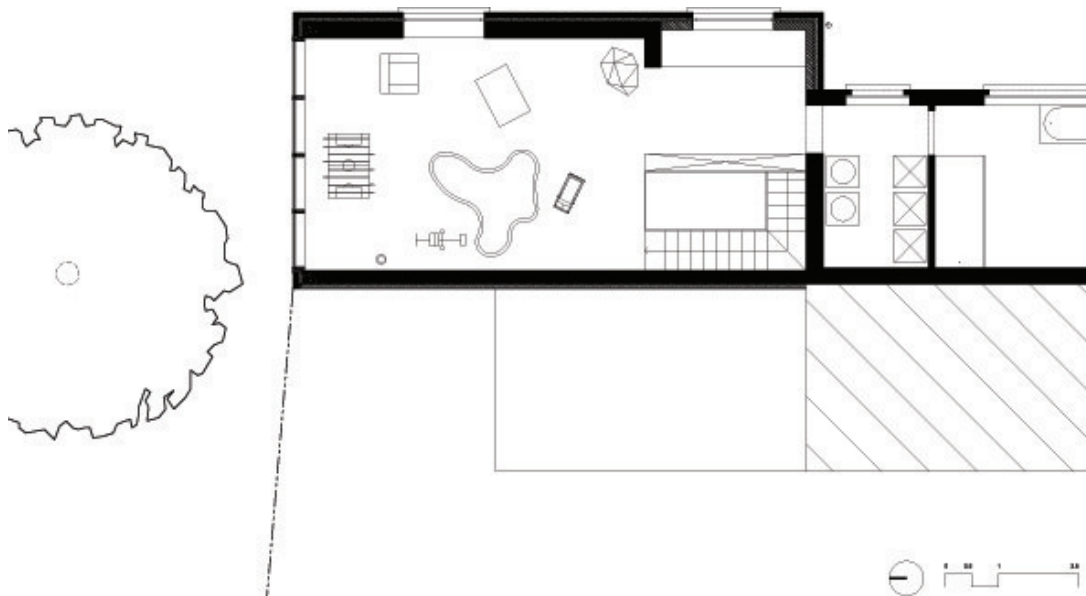
View on the connexion between the existing kitchen and the new living spaces on the ground floor
Â© Delphine Mathy



Window at ground level
Â© Delphine Mathy



Exterior facade
Â© Delphine Mathy



Plan R+1
Â© Aurélie Hachez Architecte