

Project

HOUSING VERDURE

Architects

B612 ASSOCIATES

chaussée de Waterloo 1253
1180 Bruxelles

Address

Rue de la Verdure et rue du Dam, 1000 Bruxelles

Tél : 32 2 732 96 93
Fax : 32 2 735 05 92

Programme

The programme envisions the construction of a building with 10 apartments in the framework of the contract of the Notre Dame au Rouge Van Artevelde neighbourhood. It concerns social housing apartments varying from 2 to 5 rooms for normal and big families. The apartments on the ground floor can accommodate disabled people. The project is situated between Dam street and Verdure street opposite two tall social building blocks.

limei.tsien@b612.be
<http://architecte.b612associates.net>

OTHER PROJECTS :

Viaduc nursery and cafeteria
- 2005 2009
- Bruxelles (Ixelles)

Dolez - Housing units
- 2005 2010
- Uccle

Aime-Dupont Nursery and Health Center
- 2016 2020
- Etterbeek

Charmille-Schuman
- 2011 2020
- Bruxelles

About

The prize winning project of B612 Associates begins with a series of observations arising from an analysis of the urban context and the opportunities it suggested. The plot is faced with empty spaces outside the scale of the street due to the cleared areas surrounding the social housing blocks; It appeared essential to reinforce the continuity of the blocks to stabilize the image of the neighbourhood, the two streets being equally narrow and dense. The site is close to Rue d'Artois, which has numerous gaps and indentations between the volumes. Based on this particular feature, the architects transposed the concept onto the plot in question, with a volume aligned with its neighbours on the Rue de la Verdure but set far back in the central part on the Rue du Dam. This shape makes it possible to create a small garden, beneficial for the new apartments, as well as for the street, which lacks open spaces. Rue de la Verdure has a more complex structure and it makes a fold in the alignment at the side of the plot. The architects have opted to make use of this irregular geometry to give character to the development and a significant energy in the expression of the elevation.»

Maurizio Cohen in : ? A Bruxelles, près de chez nous, L'architecture dans les contrats de quartier?, Région de Bruxelles-Capitale, 2007

Typology

Housing (include mixed use)

Status

Built

Conception

2004

Delivery

2010

Client

La Régie foncière de Bruxelles

Architects

B612associates

Stability

BEG

Special techniques

Cotec



Â© B612 associates



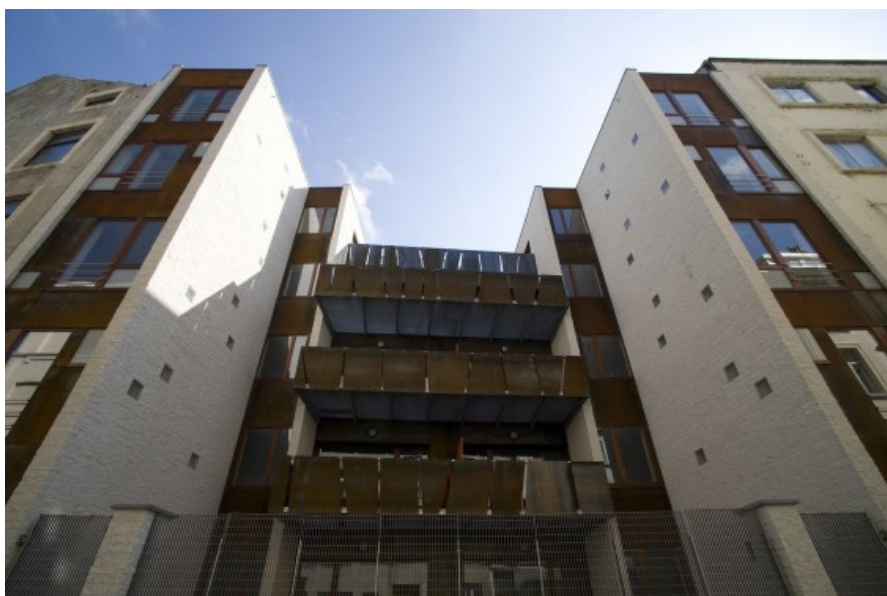
Â© B612 associates



Â© B612 associates



Â© B612 associates



Â© B612 associates