

Project

ATC AT THE ATHÉNÉE ROYALE OF SOUMAGNE

23, Quai Mativa
4020 LIEGE

Architects

BINARIO ARCHITECTES

Tél : 04 344 53 00

Address

Soumagne

info@binarioarchitectes.com
www.binarioarchitectes.com

Programme

The ATC (Advanced Technology Center) is a workshop-classroom built at the Athénée Royale of Soumagne with the task to train users coming from all sectors (High school, company, employment services) during a limited period of time. There is a main workshop with high-technology, classrooms and other functions such as front desk, rest area and cloakroom.

OTHER PROJECTS :

5 Social housing units low-energy construction, Jupille.
- 2006 2015
- Jupille

About

The ATC is part of a global reflexion over the whole site included in a masterplan established by the project authors. It was necessary to solve the anarchic spread over time. The masterplan cares about the inherent constraints according to the site and defines new guidelines for the next plans. The ATC construction represents the first phase. The building is accessible from the existing pedestrian path and is settled in a vast field next to égalité street. Its location, between the main path and that street, gives visibility from it and from the school. The project stands out because of its industrial expression and its location and confers a strong embedded value. This is not about creating an object or an island but a landmark for the school site and the égalité street. The building stands between the school and the outer world, being a training tool for both. It is therefore a place of interaction and exchange. The buffer zone left between the street and the northeast façade has a semi-public purpose that will be more assertive during the next construction phases related to the masterplan.

Water mill Paix Dieu, Amay.
- 2005 2013
- Amay

Visitor Center in the mill of Villers-la-ville Abbey
- 2010 2016
- Villers-la-Ville

12 Social Housing in Stavelot
- Stavelot

Typology

Education

Status

Built

Conception

2009

Delivery

2014

Client

Fédération Wallonie-Bruxelles - Administration Générale des Infrastructures

Total budget

569.600

Stability

JZH & Partners

Special techniques

JZH & Partners

Landscape

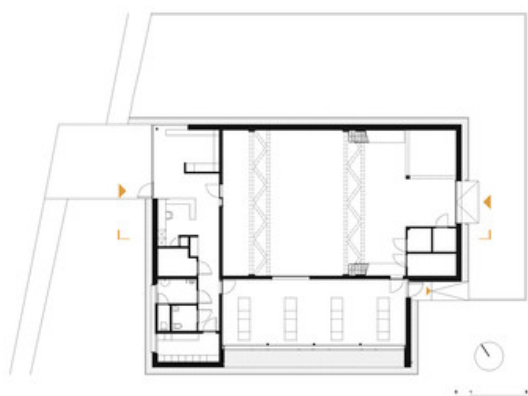
Bjorn Gielen



Â© Alain Janssens



Â© Binario architectes



Â© Binario architectes



Â© Alain Janssens



Â© Alain Janssens