

Project

# NURCERY + MULTIPLE-UNIT RESIDENTIAL HOUSING

rue de Lisbonne 22  
1060 Bruxelles

Architects

BUREAU D'ARCHITECTURE ANNE LEDROIT, VINCENT PIERRET  
ET CÉDRIC POLET

Tél : 32 2 513 09 58

info@lpparchitectes.be  
<http://www.lpparchitectes.be>

Address

rue d'angleterre 47, 1060 Saint-Gilles

Programme

Transformation "low energy" of an old tannery in 3 units  
residential and a nursery connected with an interior garden.

OTHER PROJECTS :

Typology

Civic and community

Inside-Outside private house  
- 2005 2007  
- Bruxelles (Molenbeek-Saint-Jean)

Status

Built

Conception

2009

Private house Nuit blanche  
- 2004 2008  
- Bruxelles

Delivery

2012

Client

Commune de Saint-Gilles

Cygnès-Digue: housing and public  
facilities  
- 2005 2014  
- Bruxelles

Total budget

987 561

Per square meters

940

Area

1050

Urban planning  
- 2010 2011  
- Saint-Gilles

Stability

Michael Nguyen (JZH&Partners)



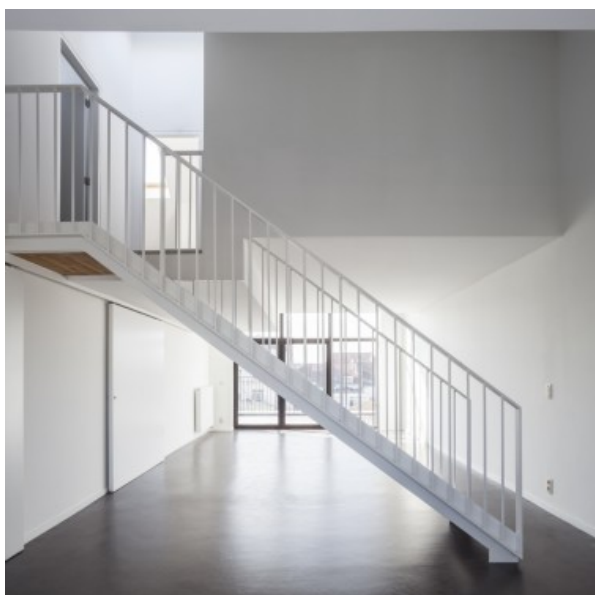
© Tim Van de Velde



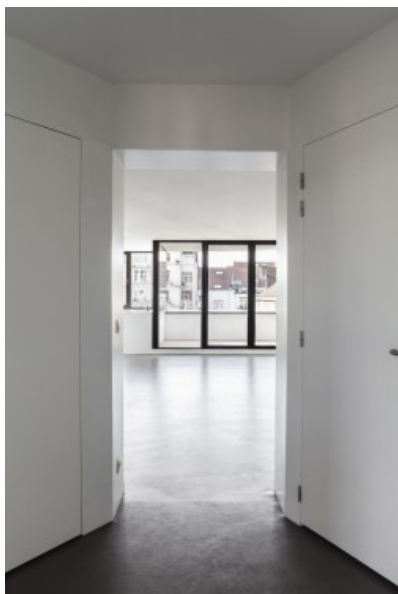
Â© Tim Van de Velde



Â© Tim Van de Velde



Â© Tim Van de Velde



Â© Tim Van de Velde