

Project

ATELIER BXL PRODUCTIVE METROPOLIS

Architects

CENTRAL OFFICE FOR ARCHITECTURE AND URBANISM

Address

Brussels

Programme

Research by design - Birmingham/Delta - Brussels

About

The study "Bruxelles Productive" investigates the role and typological forms that productive sites can take in the Brussels metropolis. This study is conducted in collaboration with Architecture Workroom and in consultation with the Bouwmeester. It took place in partnership with the Brussels Capital Region, Ruimte Vlaanderen, Ovam and the province of Flemish Brabant. "Brussels Productive" is a research based on specific, concrete, located and operational cases. The aim is to investigate, in a prospective way, a better functionality of industrial sites in the city, and to reflect on cohabitation patterns between the city and productive sites.

Typology

Industry

Status

Ongoing building work

Conception

2016

Client

Architecture Workroom Brussels / Région de Bruxelles-Capitale

Artists

Eva le Roi

Artists

Maxime Delvaux



Rue du Conseil 28 b8
1050 Bruxelles

Tél : +32 486 76 11 34 / +33 622 75 12 04

info@central-net.eu
<http://www.central-net.eu>

OTHER PROJECTS :

Gilly - EUROPAN 13 - co-runner up
- 2015
- Gilly (Charleroi)

President - roof pavilion
- 2015 2020
- Bruxelles

Gilly
- 2017
- Gilly

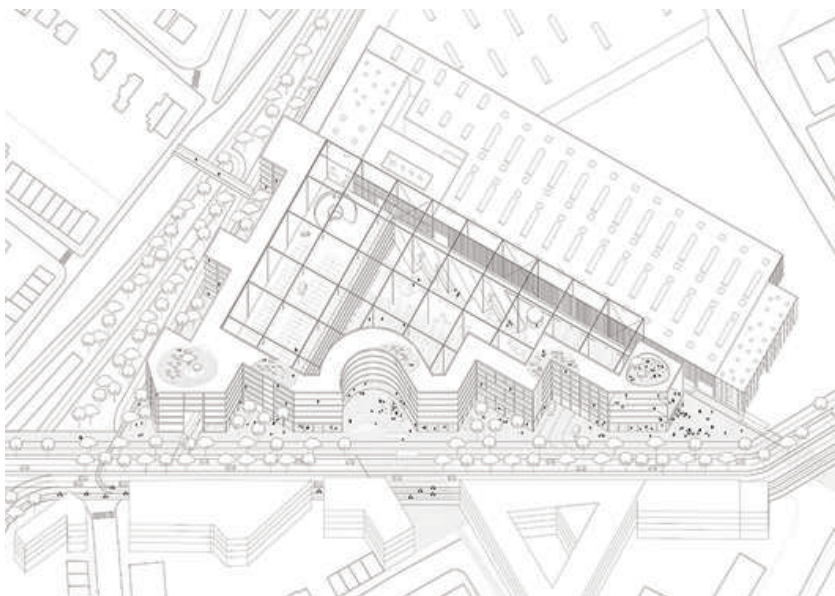
IMAL
- 2016
- Bruxelles



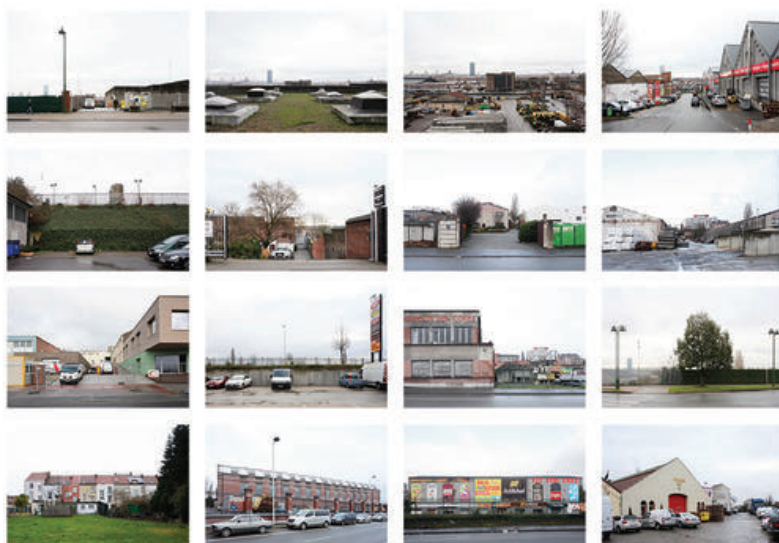
Â© Maxime Delvaux



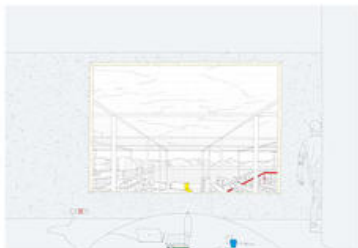
Â© Maxime Delvaux



Â© CENTRAL office for architecture and urbanism



Â© Maxime Delvaux



Â© Eva le Roi