

## Project

# ZENITH BUILDING

## Architects

CERAU ARCHITECTS PARTNERS

## Address

Bruxelles

## Programe

30.000 m<sup>2</sup> of offices and 800 m<sup>2</sup> of productive activity + car park

## About

The ZENITH BUILDING is characterised by its emblematic location in the city of Brussels. It is the terminating point of the perspective from avenue Albert and therefore also of the development of the Nord quarter, begun in the 1960s.

This office building offers 30,000 m<sup>2</sup> on 22 floors. It incorporates the most advanced techniques in terms of work environment and sustainable energy management. The office floors offer maximum flexibility enabling the optimum planning of work to suit the user and their type of activity.

Special attention has been devoted to the detail of the light and colours in the facades, which provide a strong identity, both inside and outside the building, which reinforces the symbolic character of the location.

Avenue des Courses, 20 bte 15  
1050 Bruxelles

Tél : +32(0) 2 673 60 72

cerau@cerau.be  
<https://cerau.be>

## OTHER PROJECTS :

Development of the site of the old airport of Anfa  
- 2007  
- Casablanca

International conference center 3000 seats and urban park  
- 2007  
- Ouagadougou

Courthouse and financial center of Dinant  
- 2010 - 11 2013  
- Dinant

Development of the site of the old airport of Anfa  
- 2007  
- Casablanca

## Typology

Offices (include mixed use)

## Status

Built

## Conception

2005-08

## Delivery

2009

## Client

Gaucheret s.a.Group of Codic Belgium s.a.

## Area

30.000,00

## Architects

CERAU - SCAU

## Stability

Waterman TCA

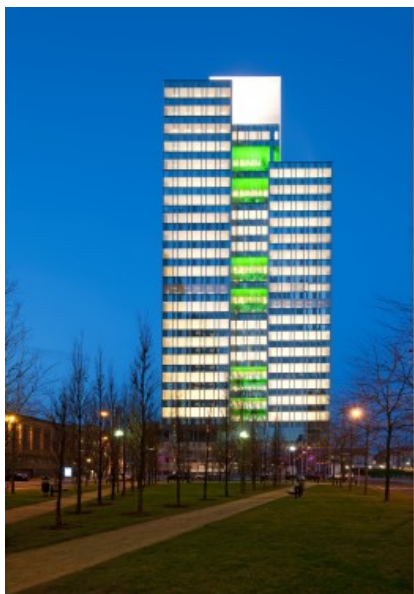
## Special techniques

VK Engineering

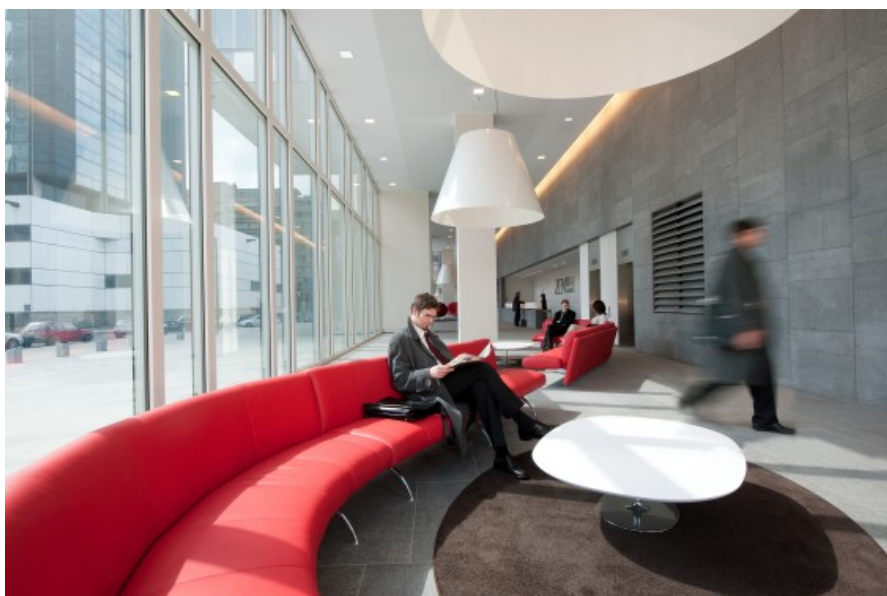
## Acoustic

D2S

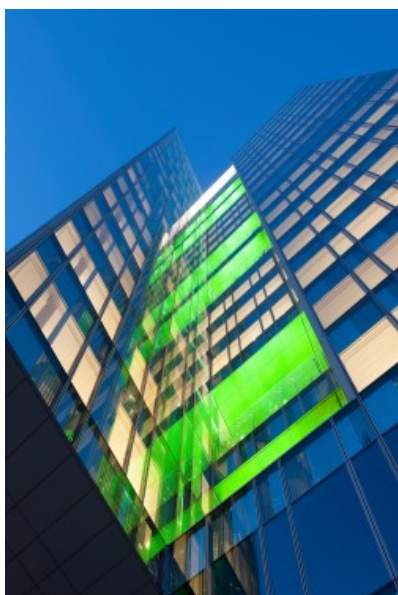
## Landscape



General view  
Â© Detiffe



Entrance hall  
Â© Detiffe



Elevation details  
Â© Detiffe