

Project

SHENZHEN LOGISTIC CITY

Architects

JDS ARCHITECTS JULIEN DE SMEDT

Address

Shenzhen

Programe

Mixed-Use, Residential, Offices, Commercial

About

We have been requested to design a tower standing 1,111 meters tall. This massive urban intervention will, be used as a tool for reforestation within the city. It is our obligation to consider green space as the main aspect of the building. Therefore, we will re-insert the mountain experience of Shenzhen's natural landscape; ascending and descending paths, traversing of the crevasse, and navigating both steep and gradual slopes, all combined with the proliferation of plant life wrapping the buildings.

The design concept is derived from a mixture of structural and programmatic issues. It allows us to artificially bring together the qualities of an urban environment, such as lifted public space surrounded by programmatic elements, such as shopping, offices, housing, and other public programming. Finally, we used the voids in between the programmatic structure to create energy with large wind turbines. All this results in a building that acts as a self-sustainable vertical city.

Typology

Various

Status

Concept proposal

Conception

2006

Area

4200000

Rue de la Senne 34B
1000 Bruxelles

Tél : 32 2289 0000
Fax : 45 3378 1029

jds@jdsa.eu
www.jdsa.eu

OTHER PROJECTS :

New Holmenkollen Ski Jump
- 2007 2010
- Oslo (Norvège)

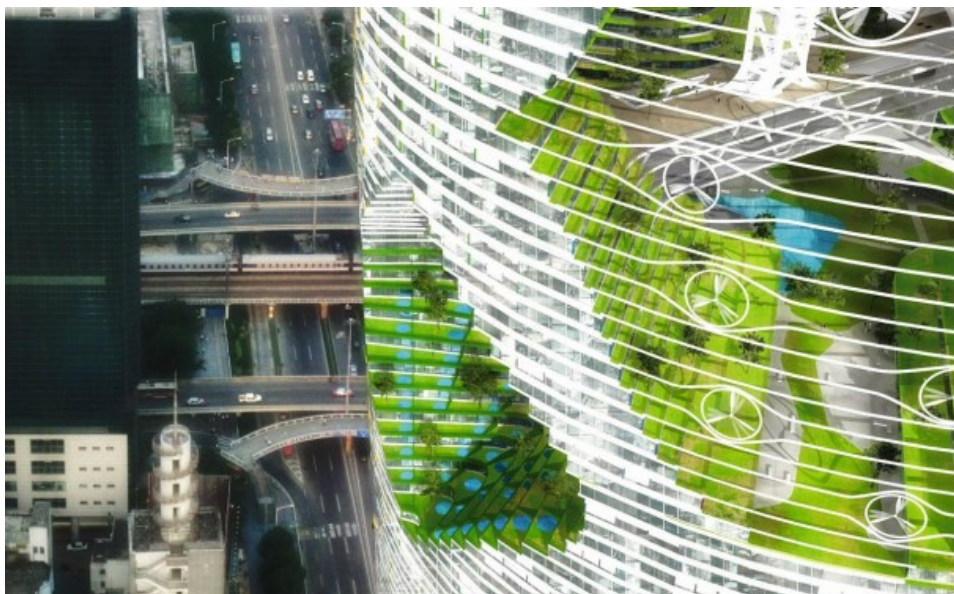
Copenhagen Harbour Bath
- 2002 2003
- Copenhagen

Dochodo Sustainable Zoological Island
- 2009
- Dochodo

Maritime Youth House
- 2002 2004
- Copenhagen



Â© JDS Architects Julien De Smedt



Â© JDS Architects Julien De Smedt



Â© JDS Architects Julien De Smedt



Â© JDS Architects Julien De Smedt