

## Project

# HOUSE HED

## Architects

MARTIAT+DURNEZ ARCHITECTES

## Address

rue Haute, 32, 4633 Melen

## Programme

The project is a dwelling house at Melen for a couple and four children in attendance every other week.  
The land is located in a residential area close to the countryside.  
The land is part of an old subdivision of four parcels, three of which are built.

## About

Taking into account the natural configuration of the site, architecture adapts to it by the means of two superimposed principal volumes, perpendicular to the level lines. The lower building is established with a print restricted on the ground, makes it possible to preserve the natural relief with an access of lime pit foot per level. The cut-and-fill are minimized to the maximum.

The project is approached with the wish of expressive, volumetric and constructive simplicity. The brown brick is declined out of single material of facing and ground.

## Typology

Private houses

## Status

Built

## Conception

2007

## Delivery

2010

## Client

Madame et Monsieur Herbiet-Dorthu

## Per square meters

1400

## Area

254

## Stability

etudes techniques SPRL

## Furniture

martiat+durnez architectes



Place cockerill, 18  
4000 Liège

Tél : 32 4 221 20 94

mdarchitectes@skynet.be

## OTHER PROJECTS :

MS private house

- 2004 2007  
- Huccorgne

House L

- 2003 2005  
- Malmedy

Transformation W

- 2008 2010  
- Villers-le-Temple

extension MD

- 2014-2018 2018-2021  
- Liège



Â© Martiat+Durnez architectes



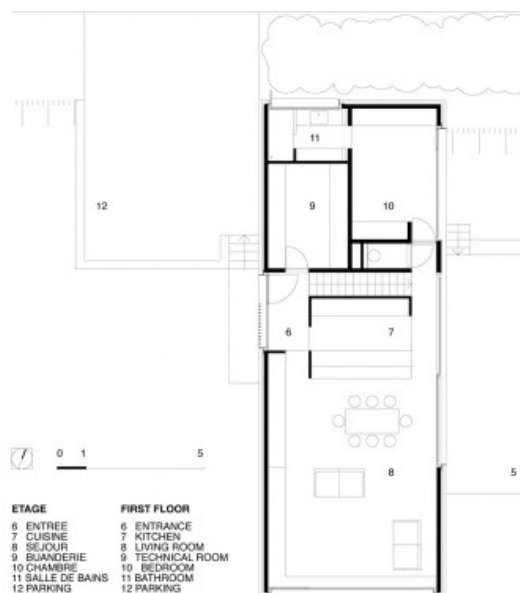
Â© Martiat+Durnez architectes



Â© Caroline Dethier



Â© Caroline Dethier



Â© Martiat+Durnez Architectes