

Project

MS PRIVATE HOUSE

Architects

MARTIAT+DURNEZ ARCHITECTES

Address

route de Bienonsart 195B , 4520 Huccorgne

Programme

Single family home (one couple, two children) in a rural area with fine landscapes. The house nestles partially in the ground to keep the 3 metre embankment at street level. The levels overlay each other, staggered according to the functions, to blend in with the existing relief. The cantilevered construction of the upper part avoids cutting into the plot on three levels. The house manages to embrace the landscape thanks to its simple and massive volumetry.

Typology

Private houses

Status

Built

Conception

2004

Delivery

2007

Client

Mme et M. Martiat-Schouben

Total budget

140 000 euros HTVA

Per square meters

915 euros HTVA

Area

153 m²

Stability

Études Techniques sprl

Others

Martiat+Durnez Architectes (design et mobilier)



Place cockerill, 18
4000 Liège

Tél : 32 4 221 20 94

mdarchitectes@skynet.be

OTHER PROJECTS :

House L
- 2003 2005
- Malmedy

House HED
- 2007 2010
- Melen

Transformation W
- 2008 2010
- Villers-le-Temple

extension MD
- 2014-2018 2018-2021
- Liège



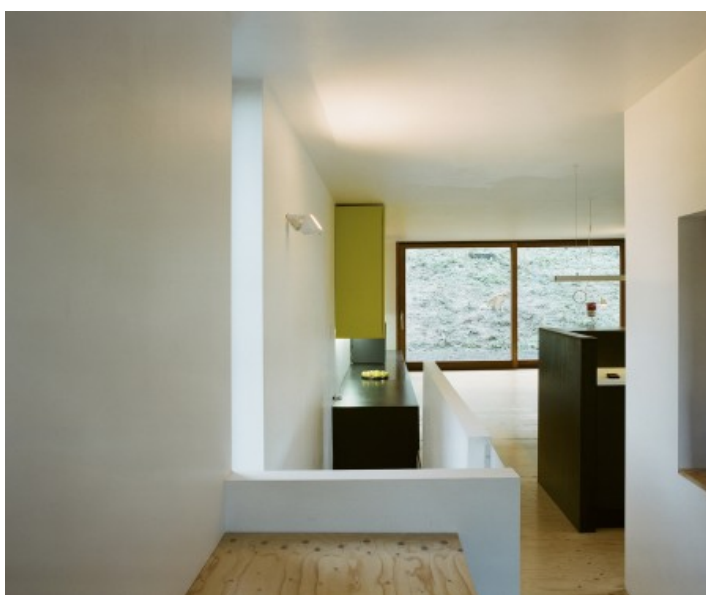
Â© Marie-Françoise Plissart pour les 10 ans de bois et habitat



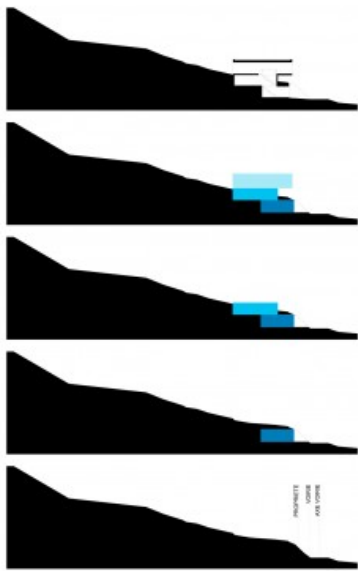
Â© Marie-Françoise Plissart pour les 10 ans de bois et habitat



Â© Martiat+Durnez Architectes



Â© Martiat+Durnez Architectes



Â© Martiat+Durnez architectes