

Project

EURO SPACE CENTER, GALAXIA

Architects

PHILIPPE SAMYN ET ASSOCIÉS SPRL ARCHITECTES & INGÉNIEURS

Address

rue devant les Hêtres 1 , 6890 Transinne (Libin)

Programme

The Euro Space Centre undertakes research into space activity and telecommunications in Europe. Companies from the space telecommunication industry are housed in a hamlet of modular 2 to 4 storey wooden buildings.

Typology

Tourism

Status

Built

Conception

2007

Delivery

2009

Client

IDELUX (Intercommunale pour le développement économique durable du Luxembourg belge)

Area

2 880 m²

Stability

Samyn et Associés sprl, Arcadis Engineering & Consulting sa

Special techniques

Samyn et Associés sprl, Arcadis Engineering & Consulting sa

chaussée de Waterloo 1537
1180 Bruxelles

Tél : 32 2 374 90 60
Fax : 32 2 374 75 50

sai@samynandpartners.be
www.samynandpartners.com

OTHER PROJECTS :

Princess Elisabeth Polar Station
- 2007 2008
- 72°S 23°E, Antarctique

SEAT of the EUROPEAN COUNCIL and
the EU COUNCIL
- 2005 2013
- Brussels

WALLOON BRANCH OF
REPRODUCTION FORESTRY MATERIAL
- 1992 1995
- Marche-en-Famenne

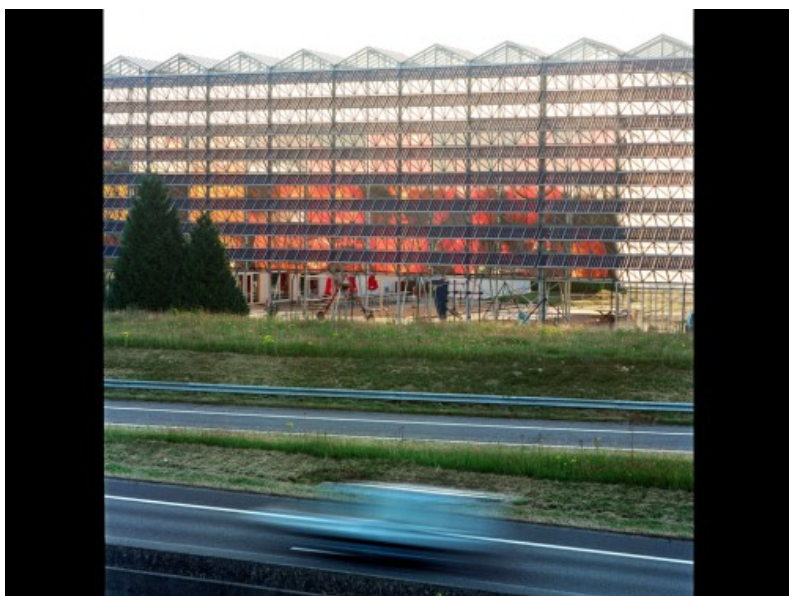
NMBS TRAIN STATION CANOPY
- 1999 2008
- Leuven



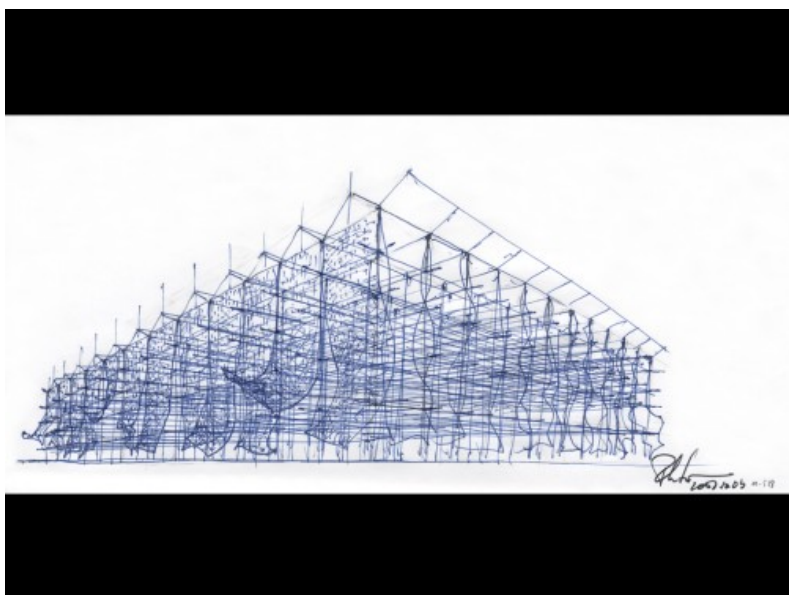
© Philippe SAMYN et ASSOCIÉS sprl architectes & ingénieurs



Â© Marie-Françoise Plissart



Â© Marie-Françoise Plissart



Â© Philippe SAMYN et ASSOCIÉS sprl architectes & ingénieurs