

## Project

# ORIGAMI

## Architects

V.O.

rue creuse 42  
1030 Brussels

## Address

Rue Général Eenens & Avenue Voltaire , 1030 Bruxelles

Tél : +32 486 22 93 37  
Fax : +32 2 248 57 05

## Programme

- housing project for dealing with situations of extreme crisis
- temporarily house
- made from easily assembled, removable, transportable and reusable elements
- must ensure minimum conditions of habitability for periods of at least one year
- hygiene equipment connected to sanitation is removable and reusable
- integration of the project into reality

info@m-architecture.eu  
www.m-architecture.eu

## OTHER PROJECTS :

## About

The project proposes to reclaim places that were abandoned because of their complex nature and installing temporarily housing modules. Brussels and more specifically Schaerbeek is the chosen location. The site consists of four distinct land types: the "entre mitoyens", the blind side wall, the corner and the green space. These typologies can decline the project under different aspects in order to reflect its modularity and adaptation options it offers. A sealed flexible rubber includes the module and was conceived on a folding accordion type that allows easy assembly and disassembly and strengthens the structure like an origami. Origami is the first principle of stiffening a planar surface, which provides, by multiplying, one accordion and form a compactable and transportable 3D structure. The idea is to play on the alternation or juxtaposition of modules to create a rhythm and breakthroughs. The modules are movable, removable and attachable, they offer the opportunity to shape the housing according to the location. The project also proposes to invest greenspace. The chosen form offers advantages such as lightness and portability and meets the strength and durability required. The nature and the space of the modules respect the vital needs, offering high brightness and all the sanitary comforts.

Bea  
- 2012-2013  
- Bruxelles

Cultural Center of Andenne  
- 2009  
- Andenne

Bridal suite  
- 2011  
- Masnuy-Saint-Jean

Folklore Museum  
- 2010  
- Mouscron

## Typology

Housing (include mixed use)

## Status

Concept proposal

## Conception

2010

## Client

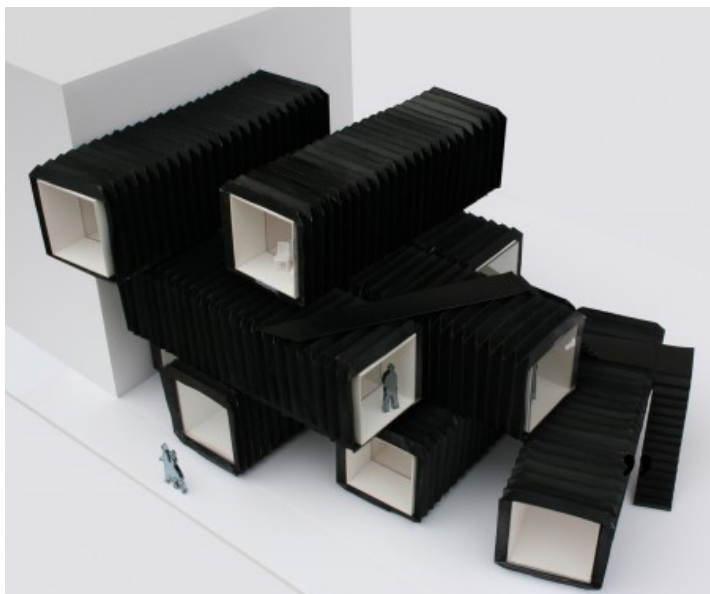
Academie des Beaux-Arts de France 2010

## Area

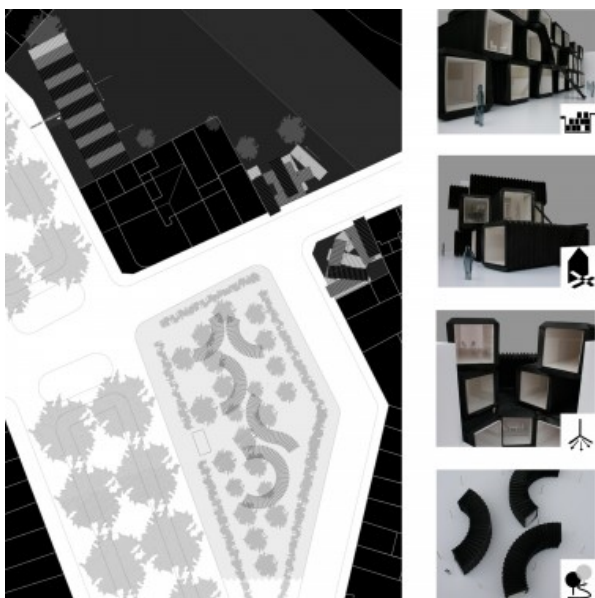
module: 26,7

## Architects

m architecture



Â© m architecture



Â© m architecture

#### LES PRINCIPES DE BASE

1. compacité légèreté transportabilité



2. rigidité stabilité modulable en plan en élévation et en superposition

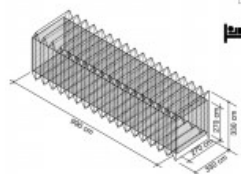
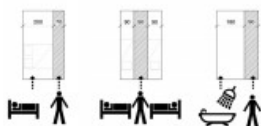


3. recyclabilité durabilité montable et démontable



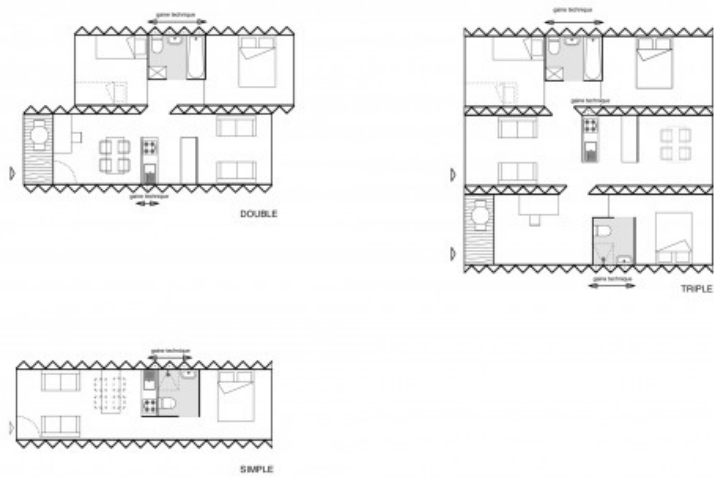
4. "home made"

5. rationalité de l'espace vital



Â© m architecture

la modularité du plan



Â© m architecture



Â© m architecture