

## Project

# WATERLOO - HOUSING AND COMMERCIAL SPACE

Brussels / Paris

## Architects

WHY ARCHITECTURE

info@whyarchitecture.eu  
http://www.whyarchitecture.eu

## Address

1180 Uccle

## Programme

Construction of a housing unit with rooftop garden and shop

## About

The owner of the property wanted to live where he worked, at the family glazery, which occupies the lot along with a parking area. The project consisted of building an apartment that faces the street above the parking area. Putting a green roof over the parking places provides the apartment with a garden terrace and severs the link with the commercial activity on the ground floor.

The project straddles two landscapes, one urban and one natural, depending on the direction. The northern façade, which faces the street and is service- and distribution-oriented, acts as a bastion against the noisy roadway. The southern-facing façade opens generously towards a peaceful forest.

Thanks to the garden terrace on the upper floor, where the living areas are located, the project can be grasped on two different scales. On the street side, the building unfolds across three floors, and is reminiscent of a small apartment building that fits into its urban setting. The rear of the building covers only two levels, and has a more domestic scale.

The concept for the front façade and the position of the stairway can be understood as an expression of the project's three separate functions: living space over the workshop, commercial space beneath and access to the parking area and workshop.

## OTHER PROJECTS :

Generis - Residential towers  
- 2010-2011  
- Chengdu

Reine Astrid - Public square  
- 2009  
- Visé

Ecole Hôtelière - Hotel boarding school  
- 2009-...  
- Namur

Jardin de Poche - Installation  
- 2004 2004  
- Bruxelles

## Typology

Private houses

## Status

Ongoing building work

## Conception

2011-...

## Area

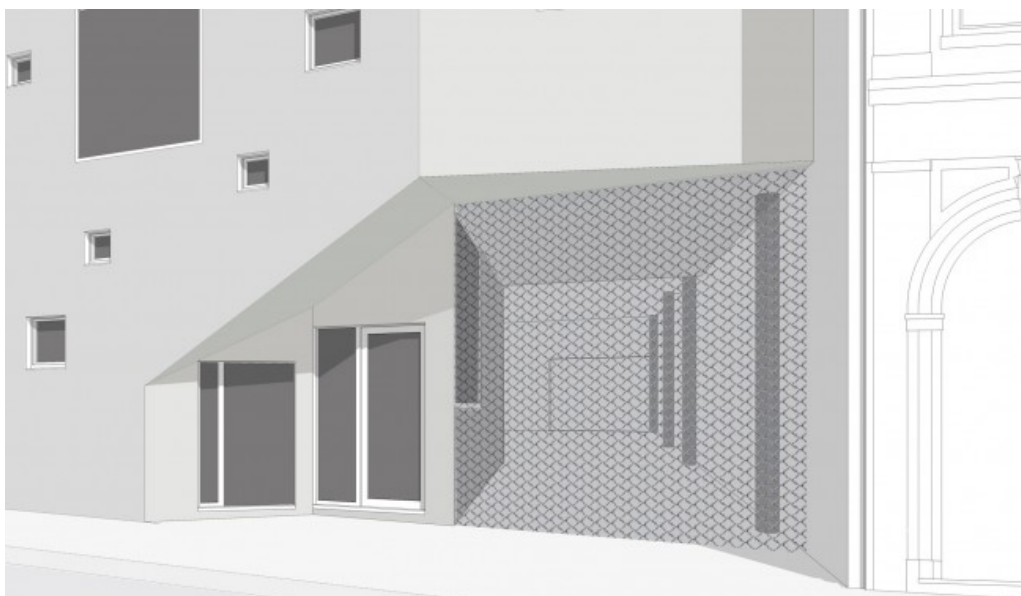
250 m<sup>2</sup>

## Stability

JZH & Partners



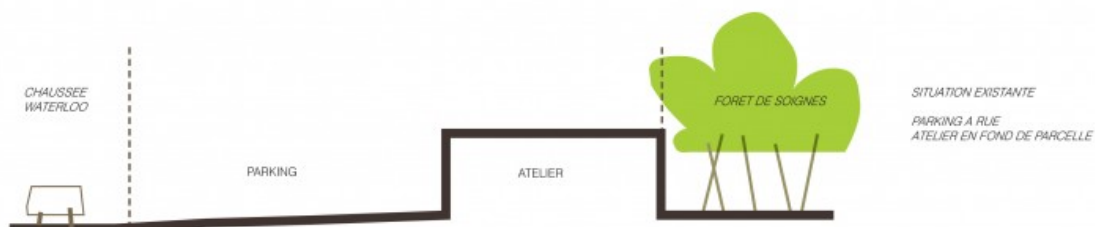
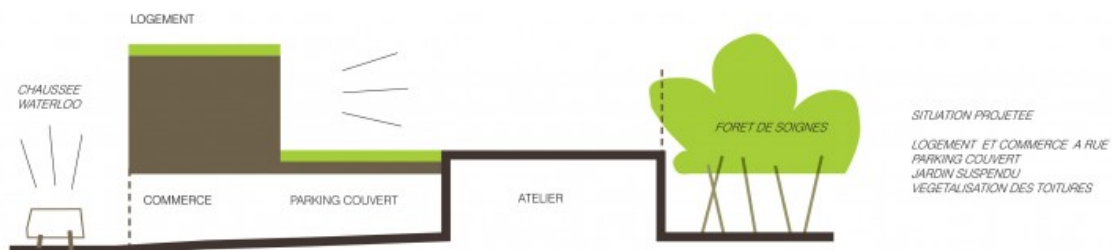
© WHY architecture



© WHY architecture



© WHY architecture



Â© WHY architecture



Â© WHY architecture