

Project

LEONETTI

Architects

ATELIER D'ARCHITECTURE FORMa*

Address

Hoeilaart

Programme

New construction - single family house

About

The design was based on a rich and constructive interaction with the building owner. The house was shaped inside the maximal constructible volume, as interpreted from the urbanist prescriptions.

The situation of the parcel, slightly below the surrounding relief, and the proximity to the neighbor's houses, inspired us to lift up the living room, magnified with terraces on the south and the west, to the first floor, searching a more generous daylight and a wider panorama.

Together with the staircase, two longitudinal floor openings covered with safety glass connect the three levels. On the second floor, the transparent floor in the bedroom access hall and the glass canopy above, characterize the circulation and vary the perceptions.

Two different layers can easily be identified in the building. The monochrome ground floor contains access, technical spaces and a polyvalent space. It functions as the pedestal of the living spaces situated on the higher levels, unified by the continuity of the volume contours.

Typology

Private houses

Status

Built

Conception

2007

Delivery

2011

Per square meters

1250

Area

390

Stability

bureau d'études BDS, Rêve / www.bebds.be

Others



chaussée de Saint-Job, 333
1180 Uccle

Tél : +32 2 372 94 40

bn@form-a.net
www.form-a.net

OTHER PROJECTS :

Lecointe
- 2009 2012
- Uccle

Grondel
- 2009 2013
- Ixelles

R House
- 2005
- Barbençon (Beaumont)

Terwagne
- 2014 2016
- La Hulpe



Â© atelier d'architecture FORMa*



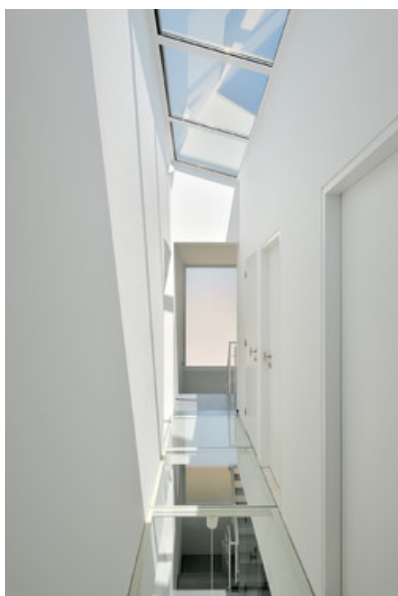
Â© atelier d'architecture FORMa*



Â© atelier d'architecture FORMa*



Â© atelier d'architecture FORMa*



Â© atelier d'architecture FORMa*