

## Project

# LOW ENERGY HOUSE - K29

## Architects

FP ARCHITECTES SC SPRL

78 / 5 Rue Defacqz  
1060 Bruxelles

## Address

lindekensweg, 1640 Rhode-Saint-Genèse

Tél : 0032 2 648 96 01  
Fax : 0032 2 544 14 58

## Programme

House  
Low-energy.  
Techniques: Insulation reinforced, heating floor, thermal solar production, VMC, home automation installation

info@fp-architecture.com  
www.fp-architecture.com

## About

Implantation of the House was investigated following landscape insertion in agreement with improved guidance promoting natural energy intakes with solar gains. The system of foundations implemented is of type deep foundations on bored piles. By its characteristic of implementation, this technique to ensure perfect insulation, continuous, at the level of the beams of foundations avoiding all risks of thermal bridge. Technical options and developed materials implemented.

## OTHER PROJECTS :

24 housing "low energy"  
- 2009  
- Eghezée

Building of 4 housing "low energy"  
- 2009 2011  
- Bruxelles

## Typology

Private houses

Eco-renovation of a building of social housing  
- 2010 2012  
- Liège

## Status

Built

## Conception

2009

## Delivery

2011

Loft  
- 2008 2009  
- Bruxelles

## Client

Privé

## Total budget

348.500 euros HTVA

## Area

220

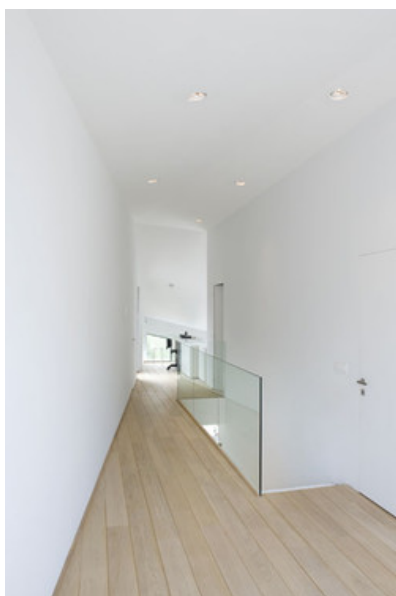
## Stability



Â© StÃ©phanie Bodart



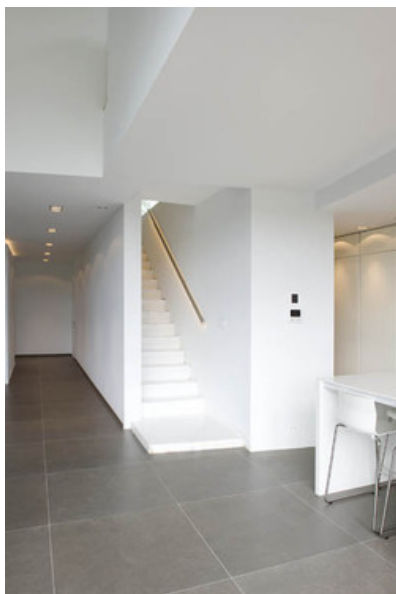
Â© StÃ©phanie Bodart



Â© StÃ©phanie Bodart



Â© StÃ©phanie bodart



© Stéphanie Bodart