

Project

RUCHE II

Architects

ICI ARCHITECTES

Address

1030 Bruxelles

Programme

Transformation and extension of a single family house in Schaerbeek

About

At a few meters from the project Ruche I, the existing home dating from the 20s, is a standard neo-classical Brussels attached construction with a large dimension. The existing extensions are too narrow, making the access to the garden difficult and presenting some major structural defects. Rethinking the volume of the extensions in order to make them compatible with the main body and ensure integrated relation with the garden are the main lines of reflection. The existing volume was opened laterally and connected to a new construction of a two-story shape, connected with a newly enlarged kitchen and spread on two levels one dedicated to the kitchen and one dedicated to the children. Playing with light and shade, the whole project expands itself outside through a concrete terrace terminated by a long gardening box.

Typology

Private houses

Status

Built

Conception

2013

Delivery

2014

Client

Privé

Area

309

ICI

avenue du Pont de Luttre 5
1190 Forest

Tél : +32 2 538 79 67

contact@noussoimmesici.be
www.noussoimmesici.be

OTHER PROJECTS :

Acacia
- 2012 2014
- Heilaart

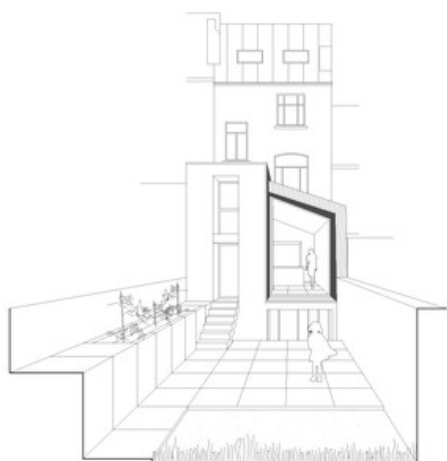
Prevot
- 2012 2013
- Bruxelles

CPAR
- 2014
- Wavre

Moulin Rouge
- 2009
- Paris



Â© ici architectes



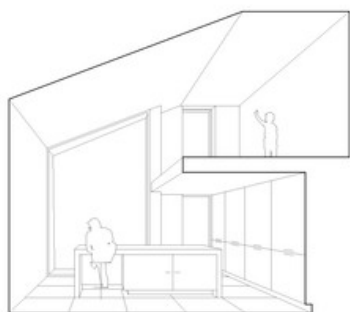
Â© ici architectes



Â© ici architectes



Â© ici architectes



Â© ici architectes