

Projet

## SHINJI

Architectes

SPKTR ARCHITECTS

Adresse

Rue Notre-Dame Ouest 1726, QC H3J 1M3 Montreal

Programme

Aménagement intérieur d'un gastronomique Japonais

Typologie

Horeca

Statut

Construit

conception

2014

livraison

2015

Maître d'ouvrage

-

Budget total

800 000.00

Budget au m2

-

Architectes

Bruno Braen

Architectes

Luc Pécourt

SPKTR

Avenue Coghen 144  
1180 Bruxelles

info@spktr-architects.be  
www.spktr-architects.be

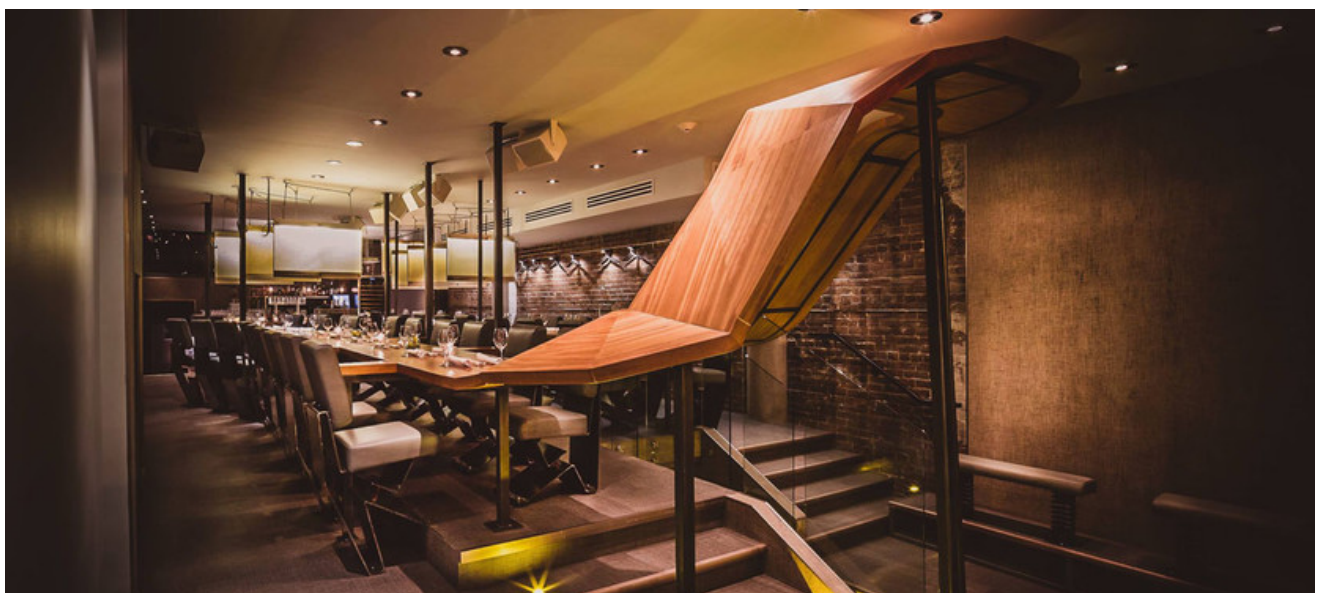
AUTRES PROJETS :

Identité(s)II  
- 2010 2011  
- Anderlecht

Beau-Chêne  
- 2010  
- Mouscron

Charli salé  
- 2015 2015  
- Bruxelles

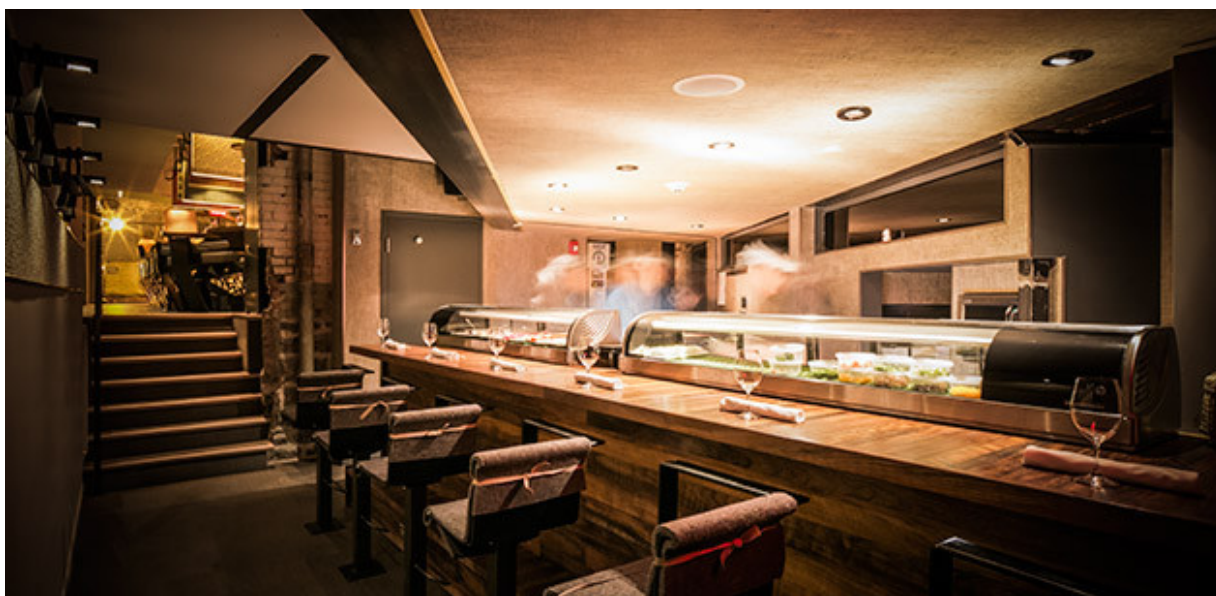
NOTKINS  
- 2014 2015  
- Montréal



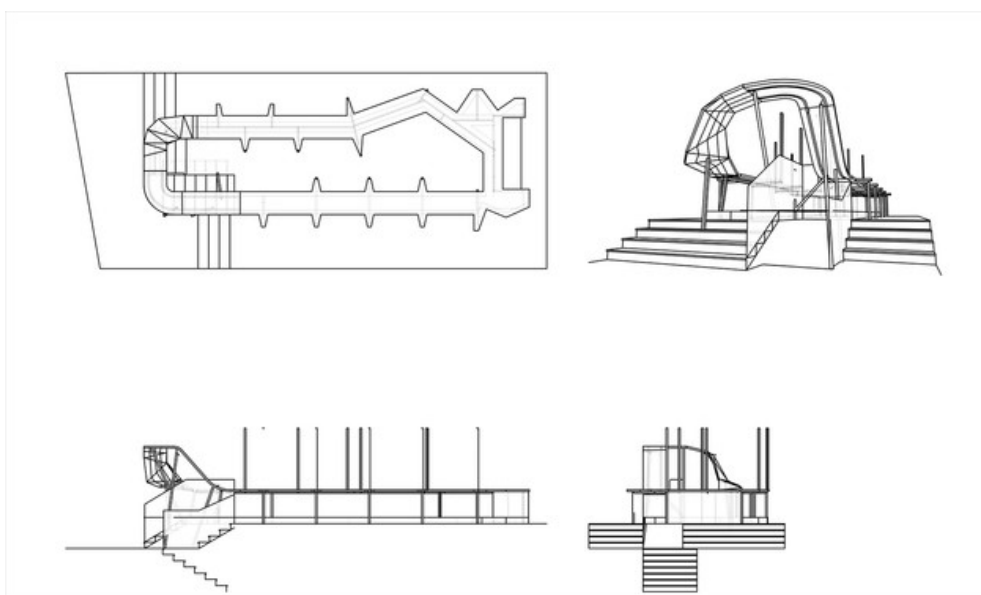
Â© SPKTR Architects



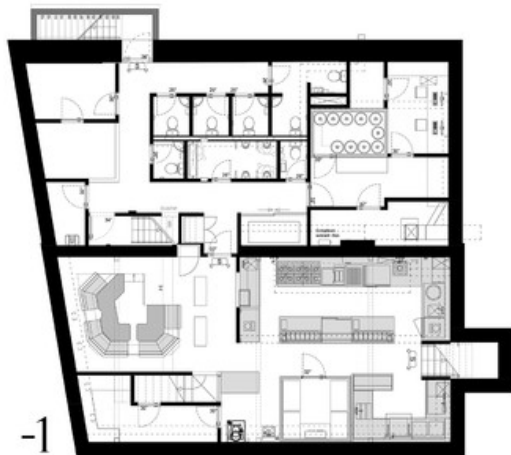
Â© SPKTR Architects



Â© SPKTR Architects

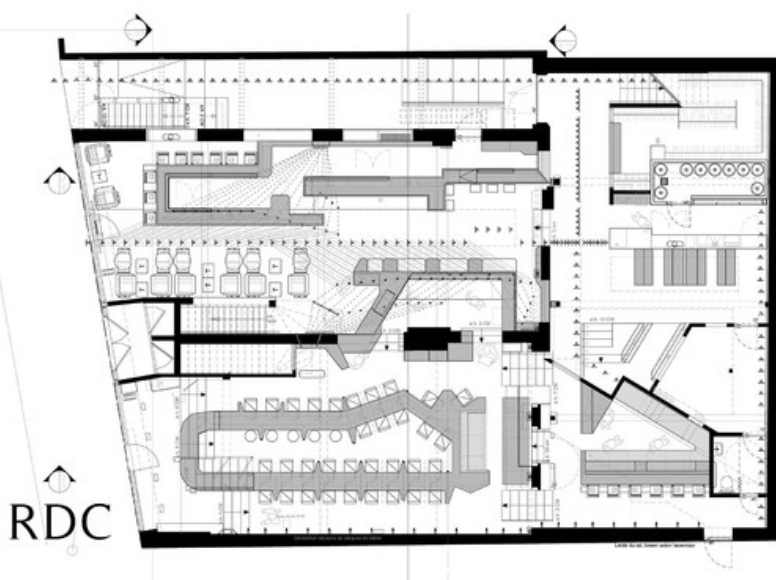


Â© SPKTR Architects



-1

Â© SPKTR Architects



RDC