

Project

PLATINUM

Architects

ARCHI 2000

Address

Avenue Louise 233, 1050 Bruxelles

Programme

Renovation of a 25.000 sq.m. office building, built in 1970.

The building tells :

- 3 underground levels for parkings, archive space, and technical rooms.

- 13 levels above ground.

The groundfloor was partially let to a post office. The remaining surface has been reserved for the entrance hall and a commercial surface.

About

Remodeling of this site built in 1970 and very well located at a \pm 800 m distance from the "place Louise" in Brussels.

A specific accent was placed on the environmental qualities, as well as on the improvement of its architectural and urban qualities.

The renovated building will be very flexible in terms of its dividing options. Considering its geographic situation, it will benefit from an exceptional parking ratio. (244 spots).

Typology

Offices (include mixed use)

Status

Built

Conception

2008

Delivery

2010

Client

Valim

Area

25.000

Avenue du Vivier d'Oie 4
1000 Bruxelles

Tél : 02/375.87.20

Fax : 02/375.75.68

info@archi2000.be

www.archi2000.be

OTHER PROJECTS :

-

-

RTBF Liège

- 2008 2011

- Liège

K Point

- 2006 2009

- Luxembourg

ROYAL GOLF CLUB SART-TILMAN

- 2011 2014

- Liège



Â© Georges de Kinder



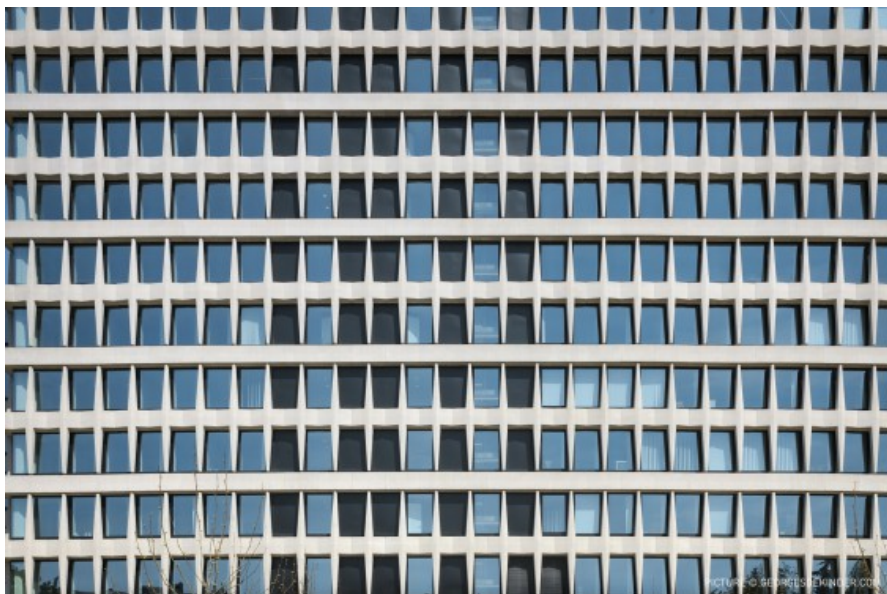
Â© Georges de Kinder



Â© Georges de Kinder



Â© Georges de Kinder



Â© Georges de Kinder