

Project

PAQUOT

Architects

DÉLICES ARCHITECTES SCPRL

Address

Ixelles

Programme

Construction of 10 passive housing units

About

The common areas are deliberately generous, people can use them to move and occupy them as places of rest and conversation. The transparency of the common ground floor offers natural light of these spaces, easy readability of the services offered while maintaining a sense of security by social control favorisé. Les large apartments are situated at the ends of the project and benefit from large terraces. The one-room dwellings take place at the center of the complex and take light from the south / east through generous ouvertures. Chaque accommodation has a private terrace. The proposed architecture expresses the inner life of the dwelling. The alley north end with large private terraces. Circulations are reported outside the building and show the activities taking place there.

Typology

Housing (include mixed use)

Status

Concept proposal

Conception

2011

Client

CPAS d'Ixelles

Total budget

1661000

Per square meters

1098

Area

1512

DXA . ARCHI

124 Rue de Stassart
1050 Bruxelles

Tél : 32 2 216 36 19
Fax : 32 2 216 06 77

team@dxa.archi
www.dxa.archi

OTHER PROJECTS :

Housing units
- 2005 2009
- Bruxelles

OASIS
- 2010
- Zaventem

LIBREX
- 2010 2012
- Bruxelles

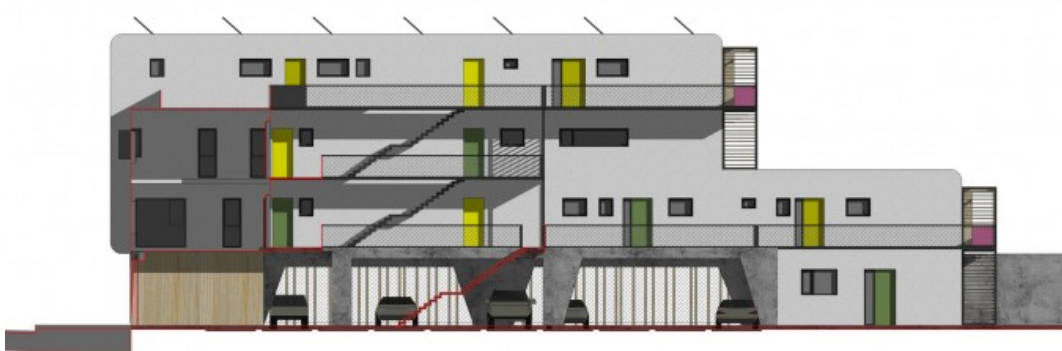
BLUM
- 2011 2014
- Bruxelles



Perspective rue Paquot
Â© D  lices Architectes scrl



Circulation and garden view
 © Delices Architectes scrl



walkways façade
 © Delices Architectes scrl