

Project

HOUSING UNITS-STUDIOS FOR ARTISTS ?CHEVAL NOIR?

Architects

L'ESCAUT ARCHITECTURES

Address

17, rue du Cheval Noir, 1080 Bruxelles

Programme

Transformation of the Hallemans breweries into housing units/studios together with a new construction, creation of a courtyard and the connection between the Brunfaut square and the Cheval Noir street.

About

This project was conducted in association with Atelier Gigogne. Openness and visual presence have determined the architectural choices of this building, which is situated on the left bank of the canal.

It accommodates 31 housing units/studios for artists of which the configurations arise from their integration in the former Hallemans brewery on the one hand and in the compactness of a small tower on the other hand.

The two buildings are connected through several footbridges.

Typology

Housing (include mixed use)

Status

Built

Conception

2003

Delivery

2010

Client

Fonds du Logement de la Région de Bruxelles-Capitale

Total budget

3 910 000 euros HTVA

Per square meters

1100 euros/m²

Area

4052 m²

Co-author

Gigogne

Stability

Ney & Partners

Special techniques

SECA Benelux

Others

De Coninck nv (General contractor)



rue de l'Escaut, 60
1080 Bruxelles

Tél : 32 2 426 48 15
Fax : 32 2 420 17 98

info@escaut.org
www.escaut.org

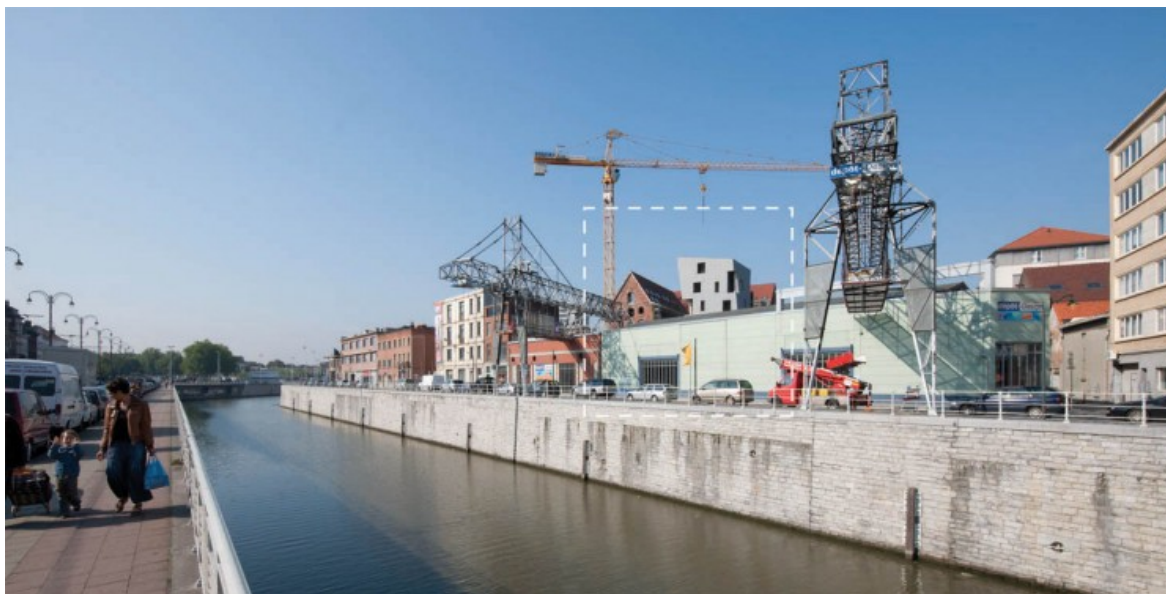
OTHER PROJECTS :

Cultural hall Victor Jara
- 2005 2009
- Soignies

Development of the left bank quaysides
of the Sambre in Charleroi
- 2010 2014
- Charleroi

Artothèque
- 2010 2015
- Mons

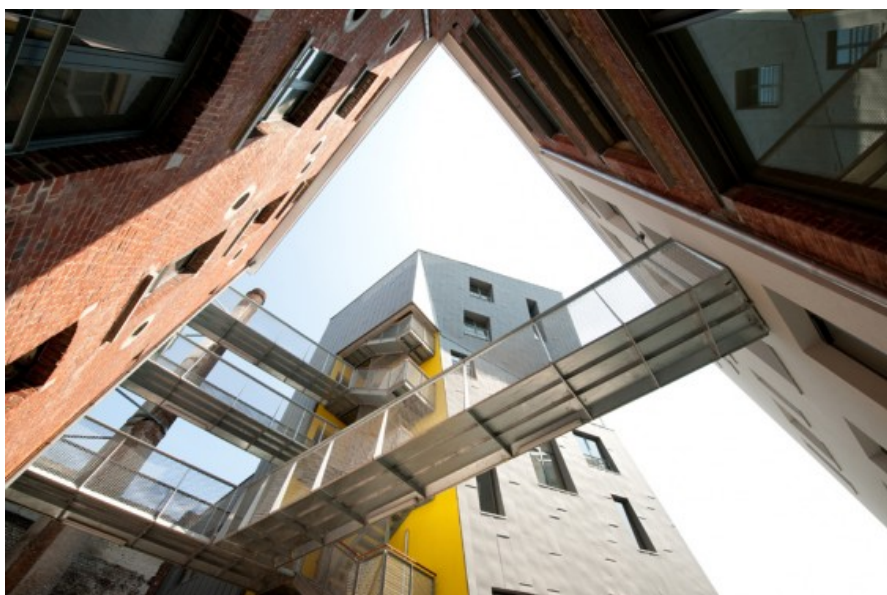
Otro
- 2008 2012
- île de Vassivière



Â© Marc Detiffe



Yellow: Molenbeek (1080 Brussels), Pink: District contract Cinéma - Belle-Vue, Green: "zone levier".
Â© L'Escaut



Â© Marc Detiffe



Â© Marc Detiffe



Â© Marc Detiffe