

## Project

# JERUSALEM

## Architects

ARJM ARCHITECTURE ET URBANISME

## Address

rue de Jerusalem, Chaussée de Haecht,, 1030 Schaerbeek  
(Brussels)

## Programme

social housing + medical center

## About

The corner remains marginal, allowing the appearance of another identity. Set back within this corner, it reminds us another image of ourselves. Understanding this setting back is the start of an introspection ? the emerging architectural project becomes the body of an ambivalence between integration and retraction. To avoid the renunciation, the project integrates the notion of being an eye-catcher. The views and their relationships appear as the foundation of the project. They sculpture the basic volume, transform it, the relationship with its environment becomes sublime.

## Typology

Housing (include mixed use)

## Status

Built

## Conception

2006

## Delivery

2009

## Client

RENOVAS ASBL, Commune de Schaerbeek

## Total budget

776.752

## Area

785

Avenue des Gaulois 3  
1040 Bruxelles

Tél : +32 2 771 79 01

info@multiple.be  
<http://www.multiple.be>

## OTHER PROJECTS :

Sterpenich  
- 2010 -  
- Sterpenich

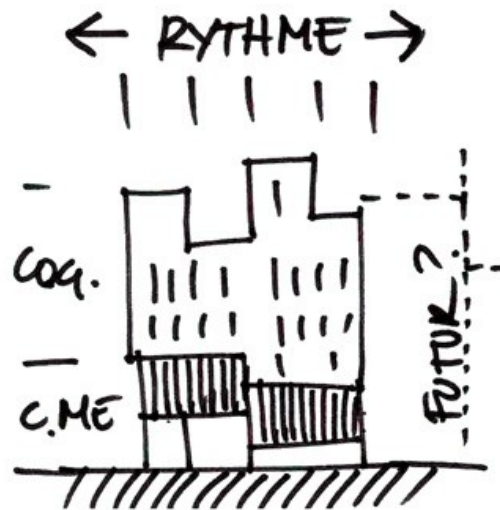
Ostende KA1 school  
- 2004  
- Ostende

Hélécine nursery  
- 2012  
- Hélécine

Merelbeke  
- 2008 2012  
- Merelbeke



Â© ARJM architecture et urbanisme



Â© ARJM architecture et urbanisme



Â© ARJM architecture et urbanisme



Â© ARJM architecture et urbanisme

