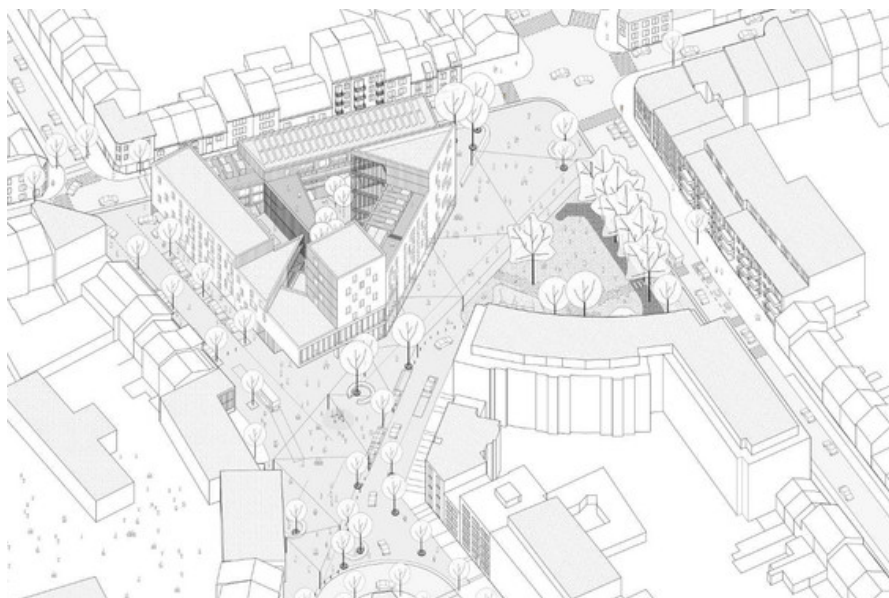


Project	"SQUARE DE L'ACCUEIL"	
Architects	ARJM ARCHITECTURE ET URBANISME	Avenue des Gaulois 3 1040 Bruxelles
Address	Bruxelles - Evere	Tél : +32 2 771 79 01
Programme	housing complex (53 units) + school facilities + underground parking + public square (+/- 10 000 m <sup>2</sup> )	info@multiple.be http://www.multiple.be
About	<p>The project is the missing ?puzzle piece? to the realization of the current site as an animated liveable space. The project proposes to address the increasing diversity and density of a Brussels neighborhood by re-thinking the interplay and the transition between public and private spaces. This is achieved, first, through landscaping which is manifested by a green (vegetation) and a blue (water) thread running through the public place, the commercial spaces on the ground floor of the proposed building and the housing units.</p> <p>The livability of the site is assured through a network of ?communities of interest?: the larger community, the neighborhood, is progressively broken down into smaller bundles of individuals and households polarized towards shared spaces, firmly located within the site at large. This proposed layout presents a viable tool to manage the density and the diversity of the urban context of the site, characteristic of Brussels today.</p> <p>The project uses the current site and its uses as the starting point, taking into account the historical evolution of the neighborhood. This approach contributes to the realization of the site?s full potential, thereby ensuring its longevity and usability in the urban landscape</p>	<p>OTHER PROJECTS :</p> <p>Jerusalem - 2006 2009 - Schaerbeek (Brussels)</p> <p>Sterpenich - 2010 - - Sterpenich</p> <p>Ostende KA1 school - 2004 - Ostende</p> <p>Hélécine nursery - 2012 - Hélécine</p>
Typology	Housing (include mixed use)	
Status	Ongoing building work	
Conception	2012	
Delivery	...	
Client	Commune d'Evere	
Area	10 000	



Â© ARJM architecture et urbanisme



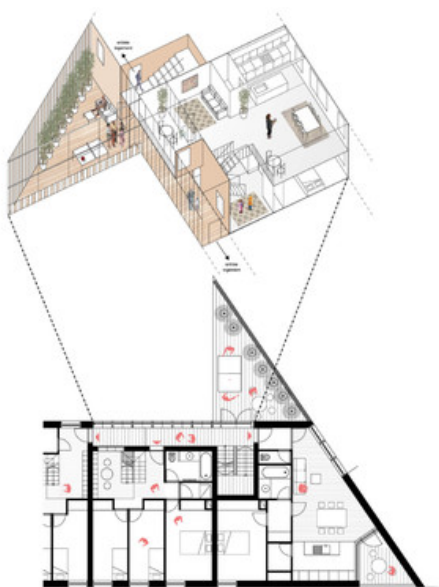
Â© Quickit



Â© Quickit



Model (BMA exhibition - 2014)  
 Â© ARJM architecture et urbanisme



Â© ARJM architecture et urbanisme