

## Project

# SOCIAL HOUSING IN SCHAERBEEK

rue Wazon 95  
4000 Liège

## Architects

MARIO GARZANITI

Tél : 32 4 223 37 12  
Fax : 32 4 223 37 12

## Address

Place Liedts, 1030 Schaerbeek

mario.garzaniti@skynet.be

## Programme

2 social housing  
1 shop

## OTHER PROJECTS :

## About

Located in a corner block, the building lends the site a sense of balance. Its volume is simple, smooth, covered with a single material: stabilized rusted steel, made of thin panels, 4 mm thick, riveted to stainless steel Omega profiles that are attached to the concrete walls. The fasteners are fixed in the center while those on the periphery are oblong in shape in order to compensate for the variations in the expansion of the materials. Flexible bands prevent the risk of a galvanic couple which occurs when Corten steel and stainless steel are in contact. A steamproof membrane, insulation and waterproofing (obtained by leaving a void behind the steel panels) are combined on the outer face of the outside walls. The extreme sobriety of the lines is due to a great attention to detail. The single material is treated in a darker shade on one of the faces, varying the tones and thus, avoiding any symmetry. In reality, the rusty tone forms a rough cut metal block ; facing, cover and mobile shutter elements are made of the same "essence" according to an ingenious pattern organization.

Social housing  
- 2001 2006  
- Grivegnée

bank in Rocourt  
- 2000-2004 2004  
- Rocourt

House in Bousval  
- 1999-2011 2012  
- Bousval

Medical practices in Huy  
- 1992-1993 1993  
- Huy

## Typology

Housing (include mixed use)

## Status

Built

## Conception

1999-2003

## Delivery

2003

## Client

Commune de Schaerbeek

## Total budget

223000

## Per square meters

710

## Area

314

## Architects

Alain Richard

## Architects

Jean François Salée

## Architects

Johanne Hubin

## Stability

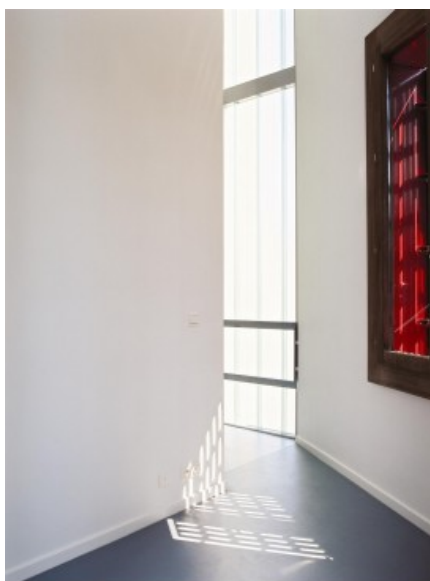
Ney and partners



© Alain Janssens



© Alain Janssens



© Alain Janssens



© Alain Janssens



© Mario Garzaniti