

Project

SPORTS HALL "LOW-ENERGY"

Architects

R<sup>2</sup>D<sup>2</sup> ARCHITECTURE

Address

Chaussée de Wavre 152, 1050 Bruxelles

Programme

Wood frame building, "low-energy" (40kWh/sqm/year).

Typology

Sport

Status

Built

Conception

2004-2009

Client

Commune d'Ixelles

R<sup>2</sup>D<sup>2</sup>

Avenue Brugmann, 12A (Boîte10)  
1060 Bruxelles

Tél : +32-2-502.06.56

info@r2d2architecture.be  
<http://www.r2d2architecture.be>

OTHER PROJECTS :

Housing Brasserie  
- 2007-2010  
- Bruxelles

Delphi Genetics Laboratories  
- 2008-2011  
- Gosselies

Sailing school  
- 2004-2007  
- Bruxelles

35 passive houses in Oignies  
- 2008-2011  
- Oignies



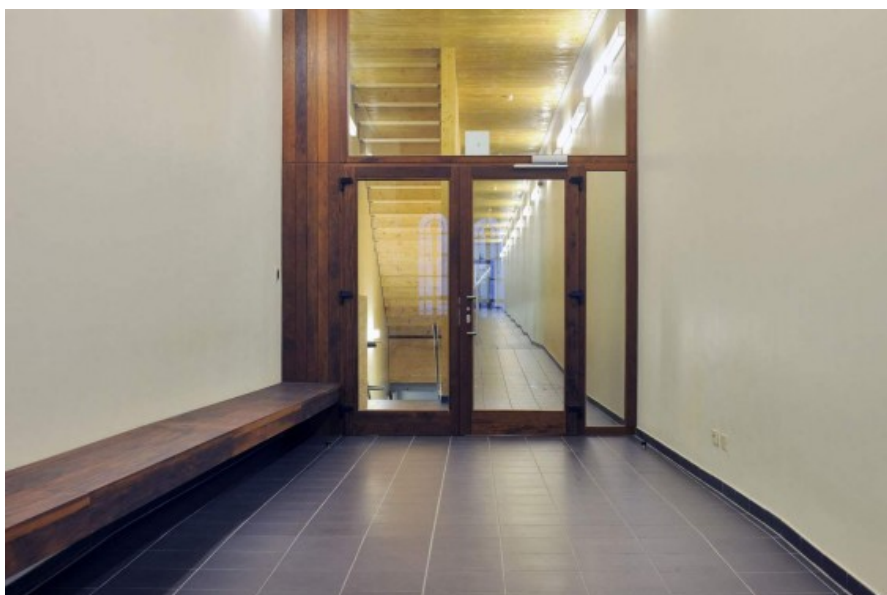
Â© picture@georgesdekinder.com



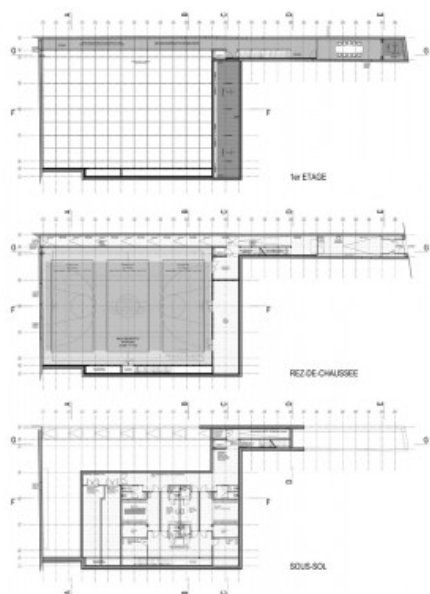
Â© picture@georgesdekinder.com



Â© picture@georgesdekinder.com



Â© picture@georgesdekinder.com



Â© RÂ²DÂ² Architecture