

## Project

# RTBF BROADCASTING CENTER

## Architects

SYNTAXE ARCHITECTS

## Address

Site du Longdoz ? Boulevard Poincaré , 4000 Liège

## Programme

The project includes, next to "regular" office function, the largest TV studio in Belgium. The building welcomes for entertainment the public as well as leading figures in secure areas.  
The building is low energy.

## About

The building is implanted in a large real estate project "Médiacité", and is designed to accommodate a large TV studio 1.400 m², a radio studio, and post-production spaces. The architecture had to face 2 goals : clearly distinguish RTBF from other occupants of the site, and at the same time, maintain the balance between the projected volume and the future developments to come in the area.

## Typology

Culture

## Status

Built

## Conception

2008

## Delivery

2011

## Client

RTBF

## Total budget

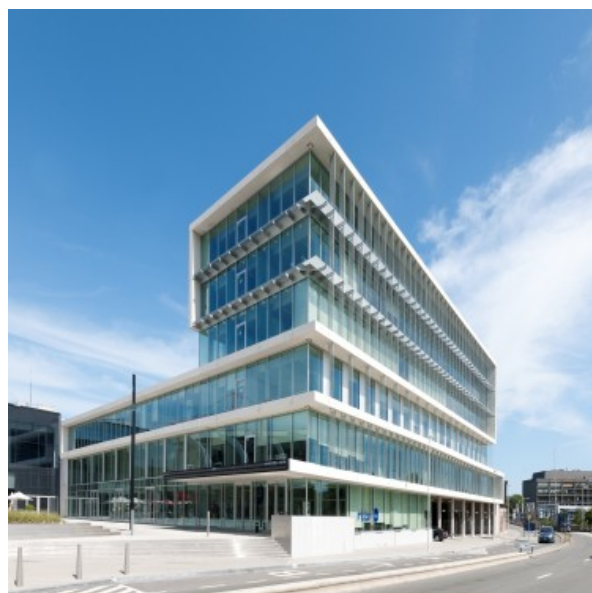
16.000.000 ?

## Per square meters

1330

## Area

12.000



Â© Georges De Kinder



Chaussée de Nivelles, 52  
1461 Haut-Ittre

Tél : +32 2 390 96 26  
Fax : +32 2 390 92 07

info@syntaxe.be  
www.syntaxe.be

## OTHER PROJECTS :

WYETH HEADQUARTER  
- 2008 2010  
- Louvain-La-Neuve

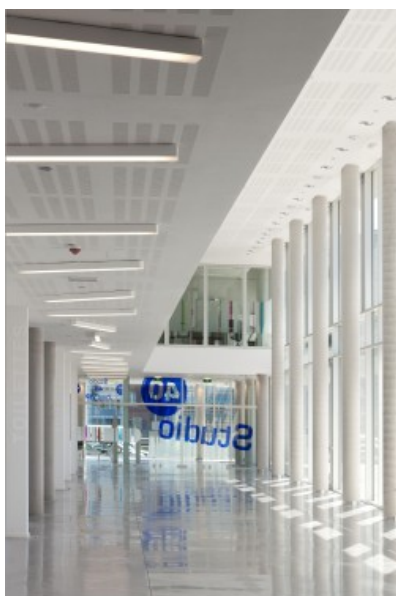
Atis & Watis  
- 2007 2008  
- Evere

JODOIGNE POLICE STATION  
- 2008 2012  
- Jodoigne

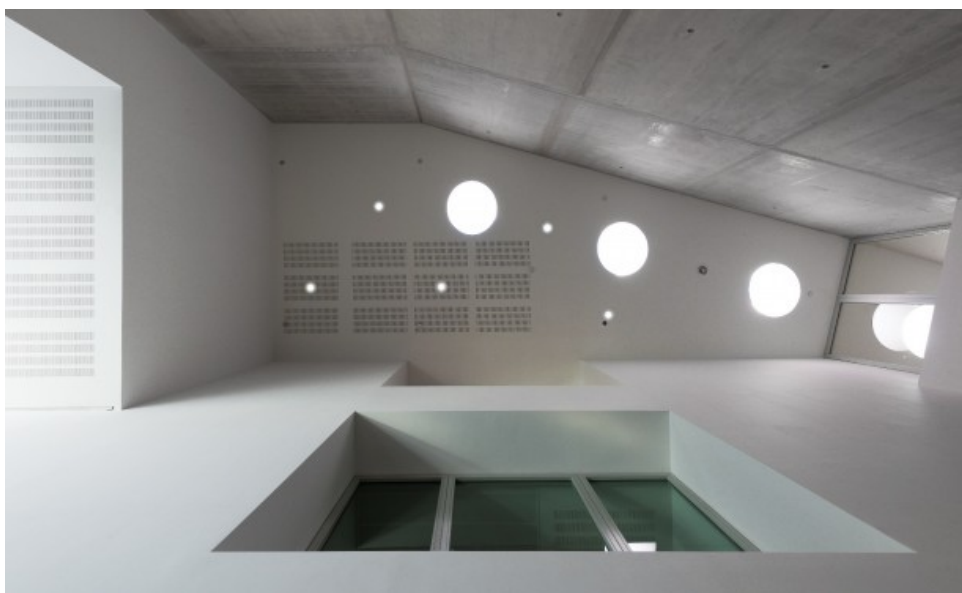
PFIZER R&D CENTER  
- 2009 2011  
- Louvain-La-Neuve



© Georges De Kinder



© Georges De Kinder



© Georges De Kinder



Â© Georges De Kinder