

Project

SOCIAL HOUSING IN GREZ-DOICEAU

Avenue Bel-Air 34
1180 Bruxelles

Architects

TRAIT NORRENBURG & SOMERS

Tél : +32 2 537 21 31
Fax : +32 2 537 81 72

Address

Tienne Vincent , 1390 Grez-Doiceau

info@trait-architects.eu
www.trait-architects.eu

Programme

Low-energy social housing

OTHER PROJECTS :

Typology

Housing (include mixed use)

Status

Unbuilt

Nursery in Laeken
- 2010-2012 2013
- Bruxelles

Conception

2009-2011

Delivery

2013

Saint-François d'Assise Secondary
School of Tubize
- 2006 2011
- Tubize

Client

Immobilière Publique de Centre et de l'Est du Brabant Wallon (IPBW)

Elementary School and Social Housing
in Molenbeek-Saint-Jean
- 2011 2013
- Bruxelles

Total budget

970.000 ?

Per square meters

1.115 ?

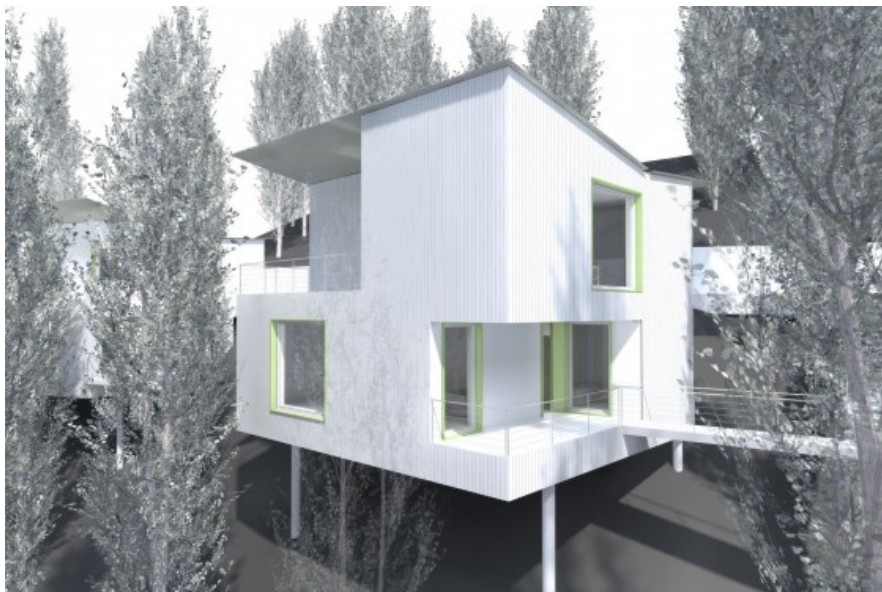
Area

870 m2

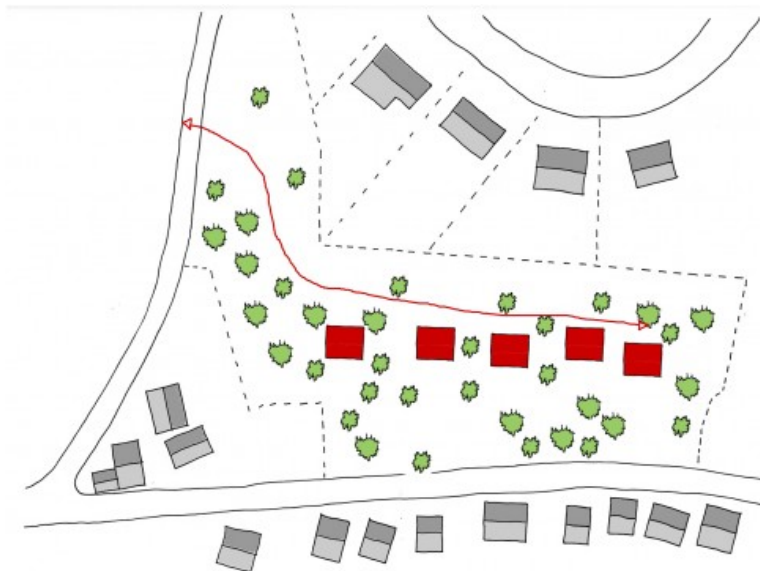
Stability

DELVAUX ingénieurs et architectes

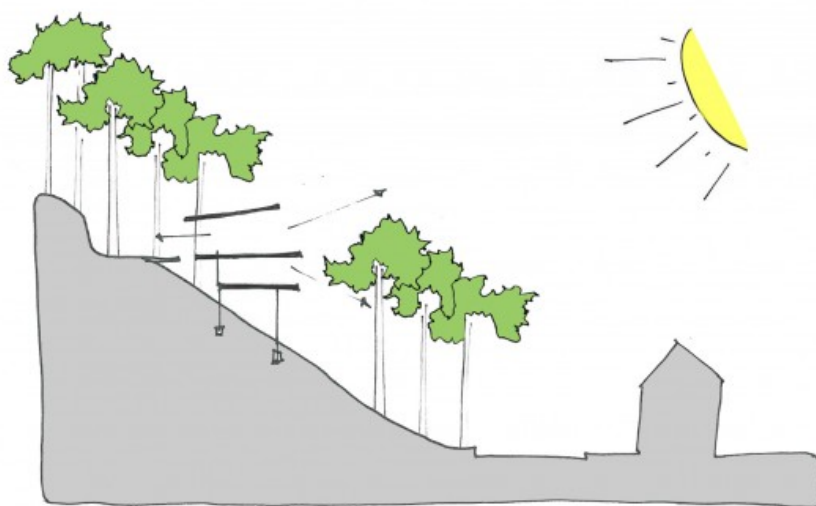
IAD Theatre School of Louvain-la-Neuve
- 2008-2011 2013
- Louvain-la-Neuve



Â© TRAIT norrenberg & somers



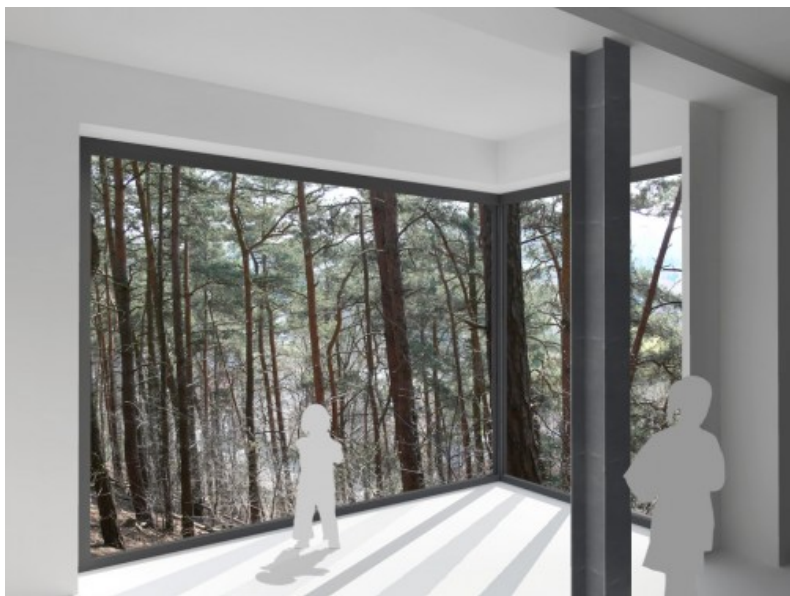
Â© TRAIT norrenberg & somers



Â© TRAIT norrenberg & somers



Â© TRAIT norrenberg & somers



Â© TRAIT norrenberg & somers