

## Project

# CREUSE

## Architects

V.O.

rue creuse 42  
1030 Brussels

## Address

Rue Creuse, 1030 Bruxelles

Tél : +32 486 22 93 37  
Fax : +32 2 248 57 05

## Programme

Full renovation of a typical Brussels house

info@m-architecture.eu  
www.m-architecture.eu

## About

The triplex takes advantage of the garden by orientating the living area towards it. The former basement-kitchen is completely refurbished and an extension allows enlarging the living room to the garden. A terrace situated on the roof of the living room is directly linked to the kitchen on the ground floor. The entire renovation aims at simplicity and respect of the building's typology. Minor interventions on the main building work allow reducing the costs while special attention is given to the different perspectives and openings between areas. Looking for innovative and low-cost details gives a personal and refreshing touch to the project. The most representative illustration of this approach is the work on the guard rails, which are stamped through by means of rows of holes of different diameters allowing reinterpreting an industrial process in a more fun way, while maintaining a low cost. The choice of materials and their alternative uses (wood fibres panels, aluminium, wood, laminate mdf for the kitchen white on the one side and black on the other, sliding window frames on the frontage opening entirely the window bay. ..) bring in this traditional house much poetry, comfort, and an appealing link to contemporary interferences.

## OTHER PROJECTS :

Bea

- 2012-2013  
- Bruxelles

Cultural Center of Andenne

- 2009  
- Andenne

Bridal suite

- 2011  
- Masnuy-Saint-Jean

Folklore Museum

- 2010  
- Mouscron

## Typology

Private houses

## Status

Built

## Conception

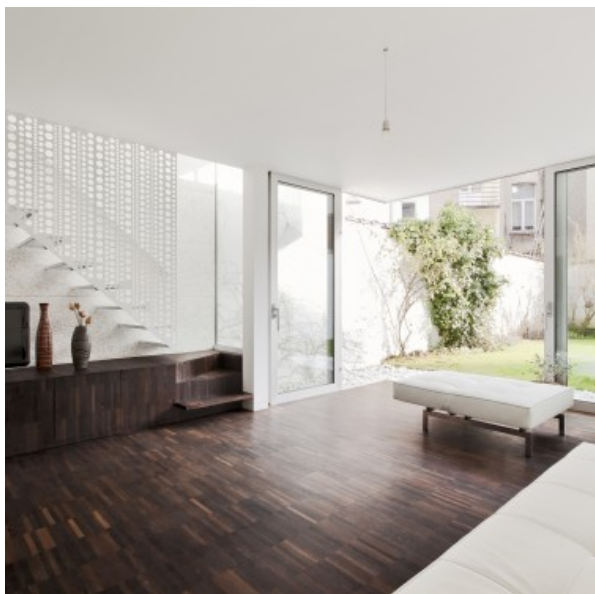
2009

## Area

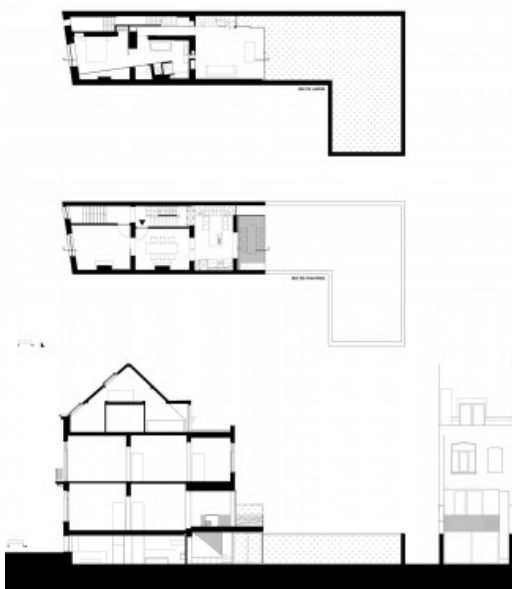
250

## Architects

m architecture



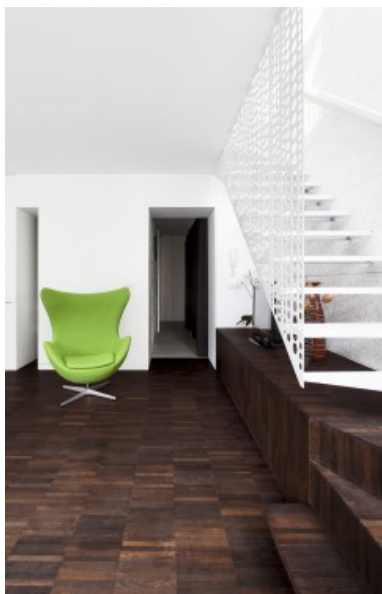
Â© bepictures



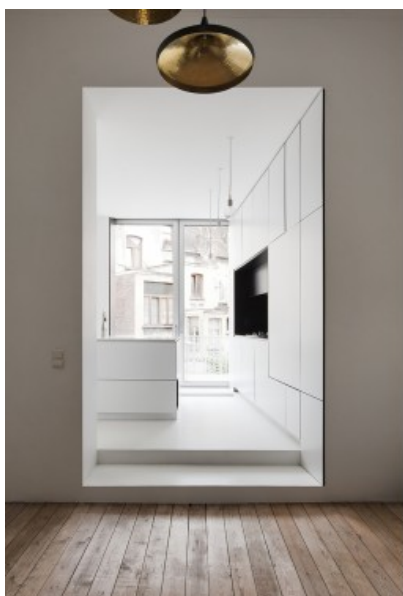
Floor plans / Section  
Â© m architecture



Â© bepictures



Â© bepictures



Â© bepictures