

Project

RO TSAERT

Architects

V2W ARCHITECTES SPRL

Address

Wezembeek

Programme

Extension of a house in Wezembeek, low energy, wood frame, and sustainable materials

Typology

Offices (include mixed use)

Status

Built

Conception

2006-2008

Delivery

2009

Client

Rotsaert

Area

183



Avenue du Prince d'Orange, 36A
1180 Bruxelles

Tél : +32 2 375 45 47

info@v2w.be
<http://www.v2w.be/>

OTHER PROJECTS :

Orange36A
- 2005 2007
- Bruxelles

Vervan
- 2005 2008
- Uccle

Ecocity
- 2009 2012
- Bruxelles



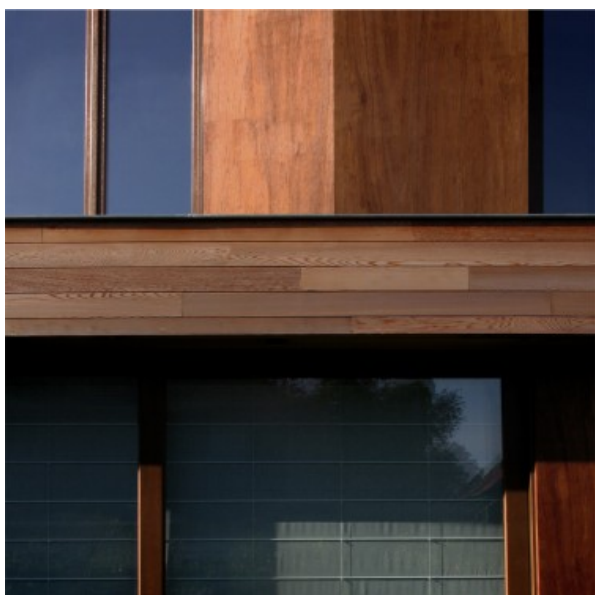
Â© V2W Architectes sprl



Â© V2W Architectes sprl



Â© V2W Architectes sprl



Â© V2W Architectes sprl



Â© V2W Architectes sprl