

Project

AEROPOLIS II

Architects

ARCHITECTEASSOC.

Address

avenue Urbain Britsiers 5, 1030 Bruxelles (Schaerbeek)

Programme

Construction of an office building and plaza avenue Britsiers in Schaerbeek.

About

AEROPOLIS is an urban UFO. But its compact form sits squarely on street alignment south just to show it does belong there, discretely steps back west liberating a sunny plaza like a breather off the busy boulevard, and humbly aligns its cornice levels with the massive KINETIX next door. The resulting built form wraps itself around a federating patio ensuring optimal daylight entry for all occupants. So it is a respectful UFO.

AEROPOLIS is also an eco-ovni, being at design stage Europe's largest passive office building, Belgium's largest when finished. Environmental concerns were an integral part of the client brief at competition stage already, so from the onset priority was given to investments and construction principles reducing energy consumption and the use of non-renewable resources. Highly-effective thermal insulation and efficient natural and forced ventilations help reach these goals.

The compactness achieved limits façade surfaces, thus lowering thermal loss. The main load-bearing structure is bare pre-fabricated concrete, for its thermal inertia. Façade walls are composed of one-story high pre-fabricated timber frames of two types, opaque or glazed, of variable widths allowing them to be placed according to the varying organization of office spaces on each level ? the resulting hopscotch of solids and gaps amplified by projecting volumes incorporating the automatically-opening ventilation frames.

avenue de l'Observatoire 11E
1180 Bruxelles

Tél : 32 2 410 76 77

info@architectesassoc.be
www.architectesassoc.be

OTHER PROJECTS :

EMPEREUR
- 2008 2014
- Bruxelles

BELMONT COURT
- 2002 2006
- Bruxelles (Etterbeek)

NATIONAL THEATRE
- 2000 2004
- Bruxelles

BRUSSELS GREENBIZZ
- 2012 2016
- Bruxelles (Laeken)

Typology

Offices (include mixed use)

Status

Built

Conception

2005

Delivery

2010

Client

Groep Arco - KWB - KAJ - KAV

Total budget

11 500 000

Per square meters

1316

Area

7 388 HS & 2 702 SS

Stability

Setesco

Special techniques

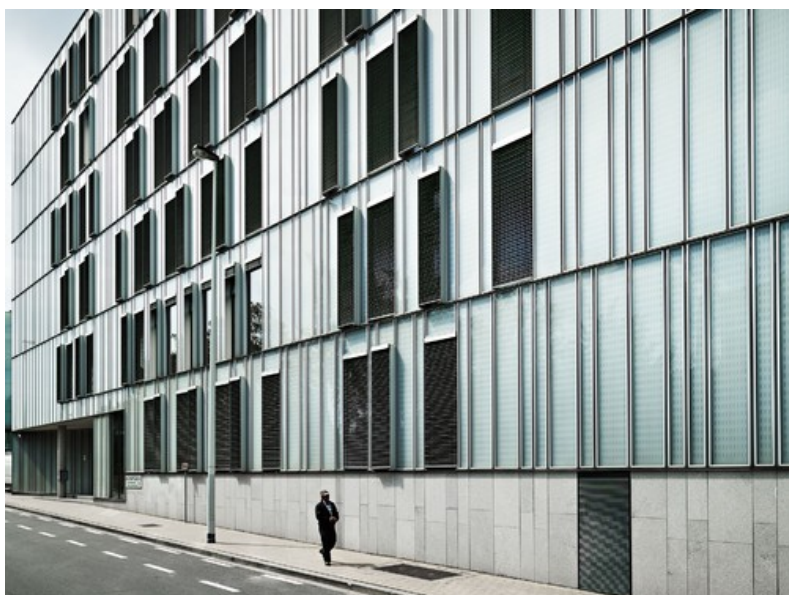
Cenergie - ingenieursbureau Stockman

Others

Dexia Real Estate



Â© Marc Detiffe



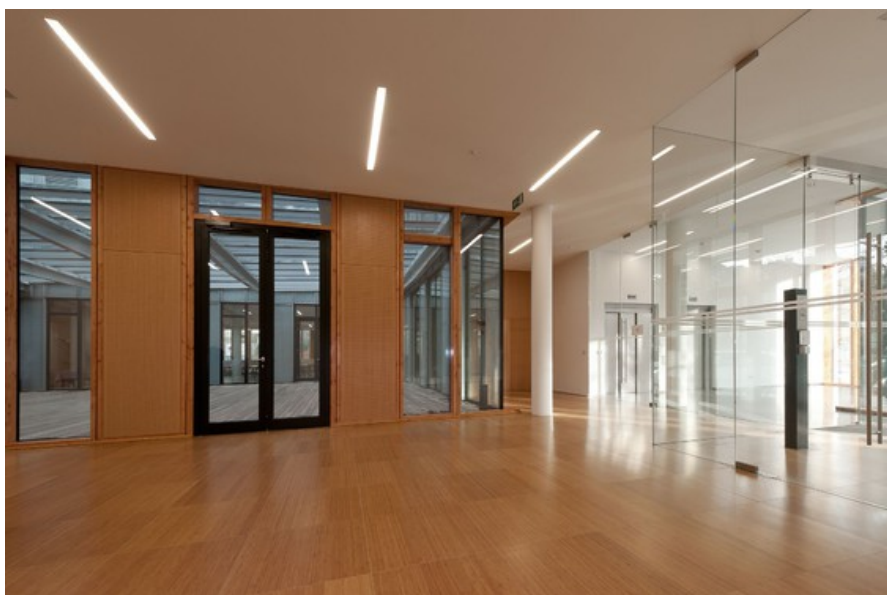
Â© architecteassoc.



Â© Marc Detiffe



Â© architecteassoc.



Â© architecteassoc.