

Project

TOWNHOUSE LOW ENERGY SCHAERBEEK

Architects

DUNE ARCHITECTURE SPRL

Address

1030 Schaerbeek

Programme

Family dwelling space with relatives including dressing room and bathroom, 3 children's room with shower.

About

This house was designed to make the most of the light. A central skylight bathes the living room to the ground floor. The different parts are disposed around the skylight. For the volume, the intention was to align with the covers on each side which creates an interesting play of volumes. Low-energy housing with double-flow mechanical ventilation with heat recovery.

Typology

Private houses

Status

Built

Conception

2010

Delivery

2012

Client

Privé

Architects



Faubourg de Charleroi, 34
1400 Nivelles

Tél : +32496486493

Fax : +3267877404

n.petit@dune-architecture.be

<http://www.dune-architecture.be>

OTHER PROJECTS :

Renovation Rixensart

- 2019 2021

- Nivelles

New home Genappe

- 2014 2016

- Nivelles

-
-

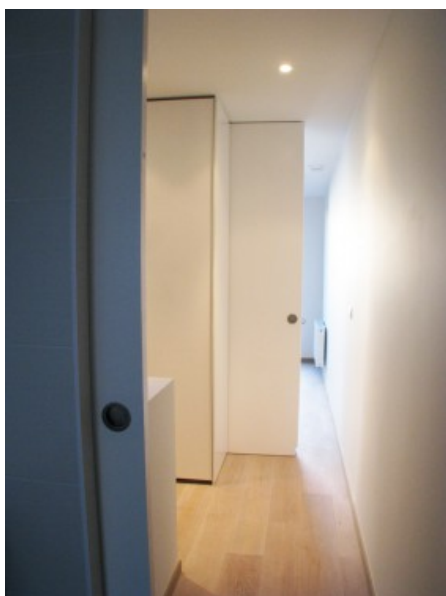


Rear elevation.

Â© Nicolas Petit



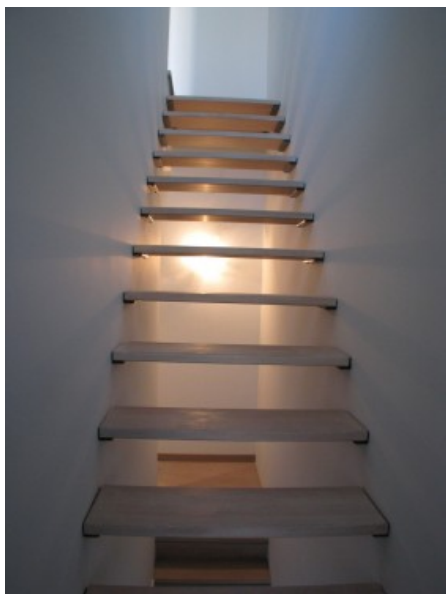
Interior. Living and stair.
Â© Nicolas Petit



Parent's room.
Â© Nicolas Petit



Light.
Â© Nicolas Petit



Stair.
© Nicolas Petit